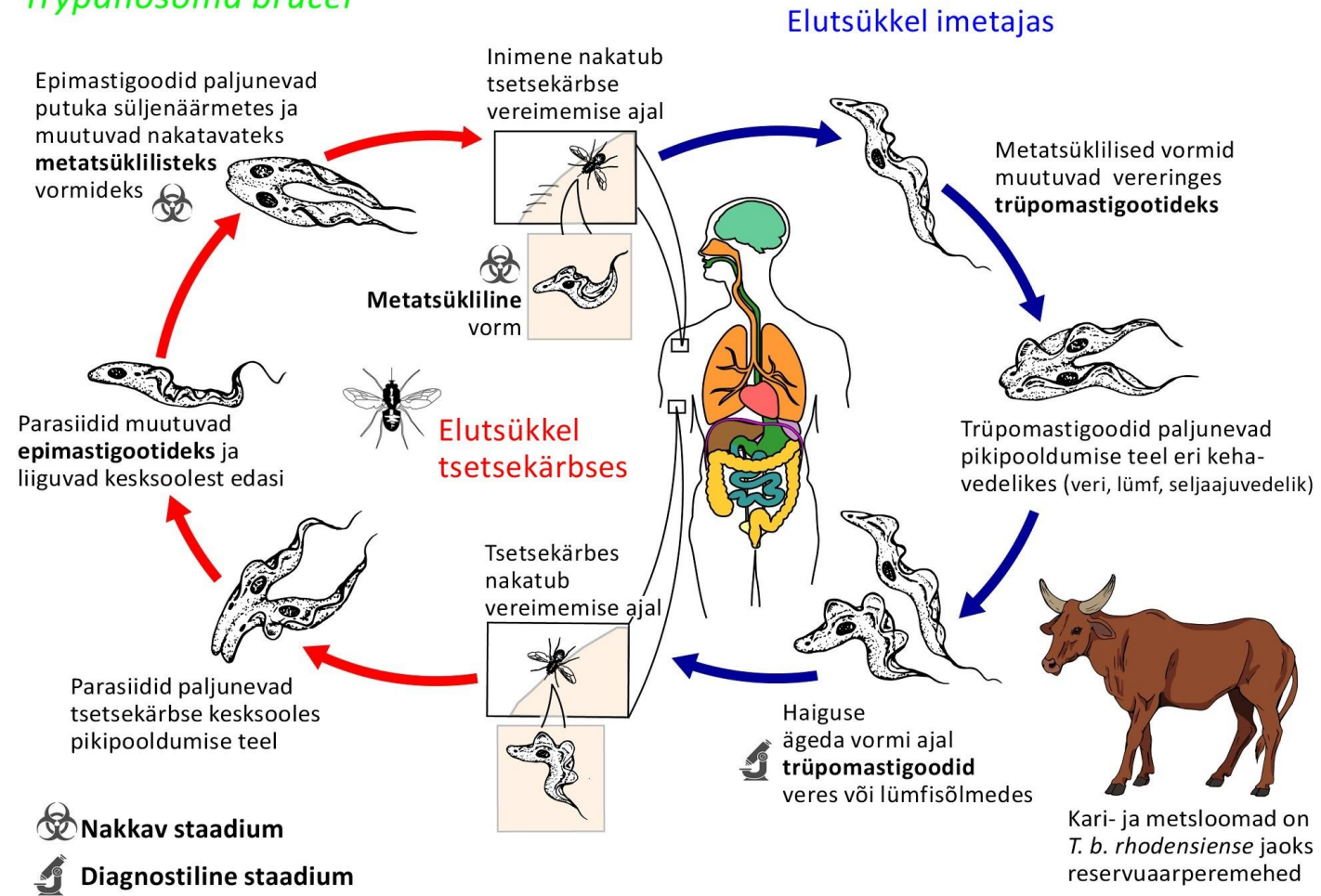


VALIK PARASIITIDE ELUTSÜKLEID

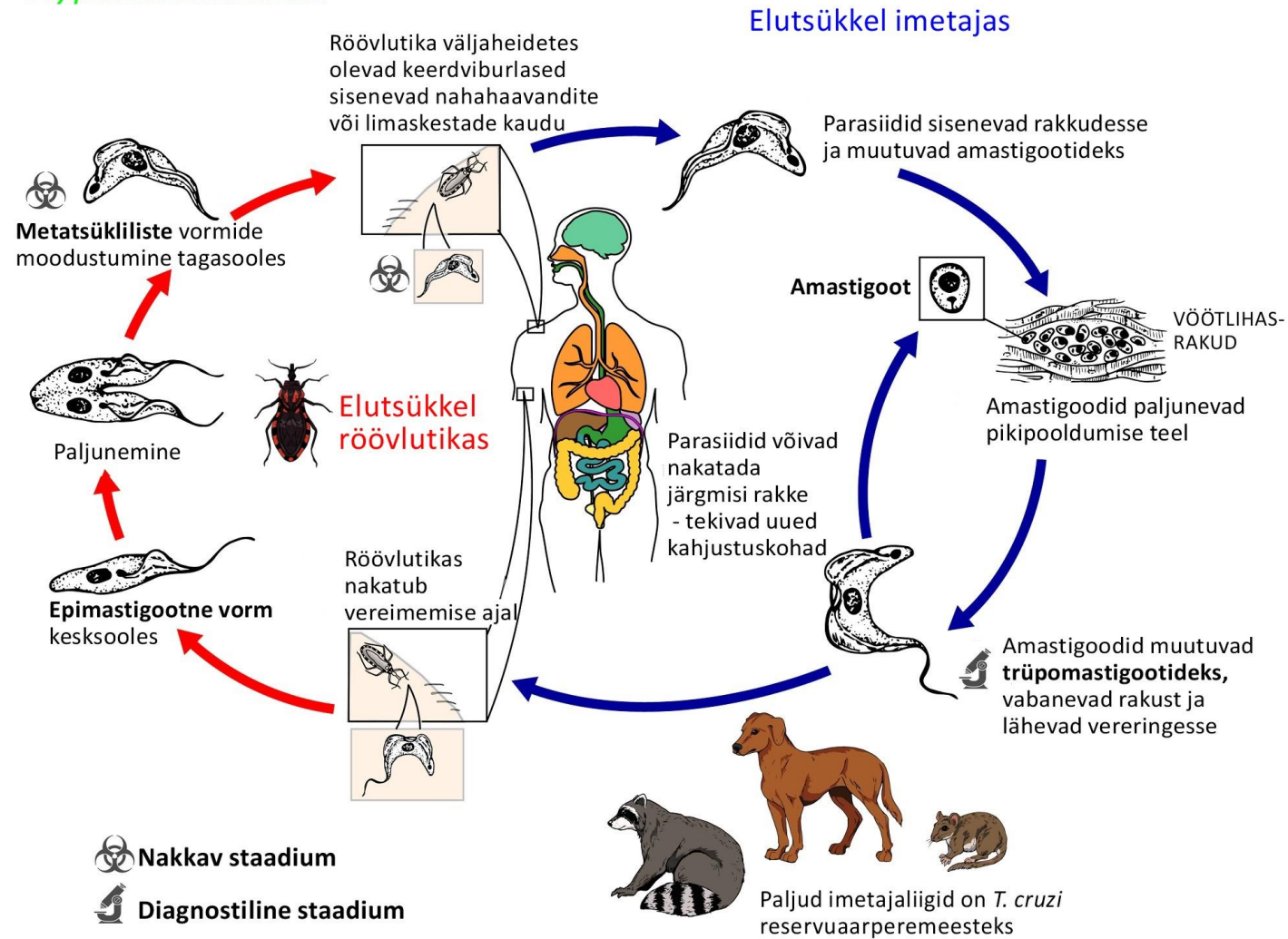
Inimese ainuraksed parasiidid

Tõlgitud ja kohandatud leheküljelt *Centers for Disease Control and Prevention* <https://www.cdc.gov/dpdx/index.html>

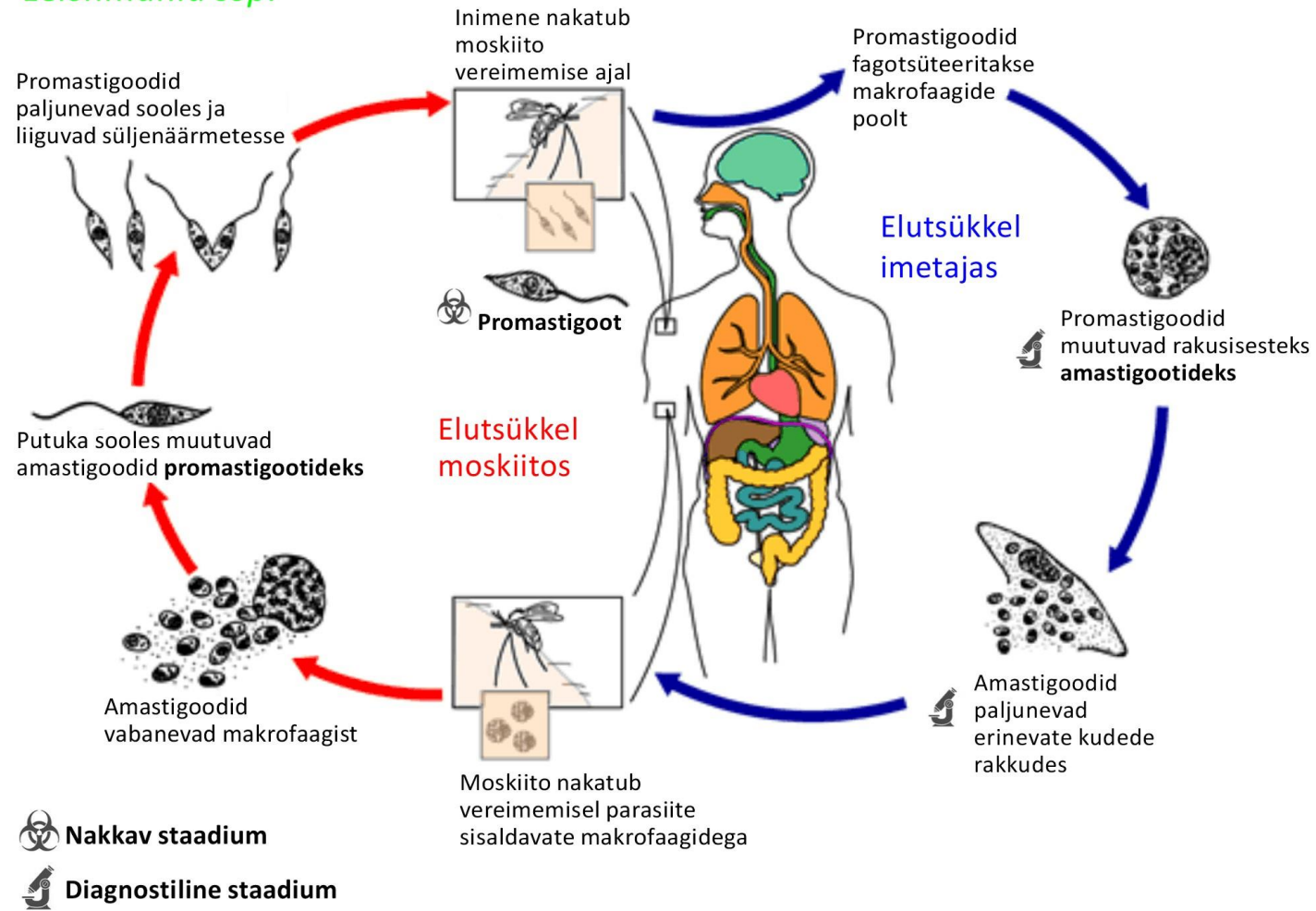
Trypanosoma brucei



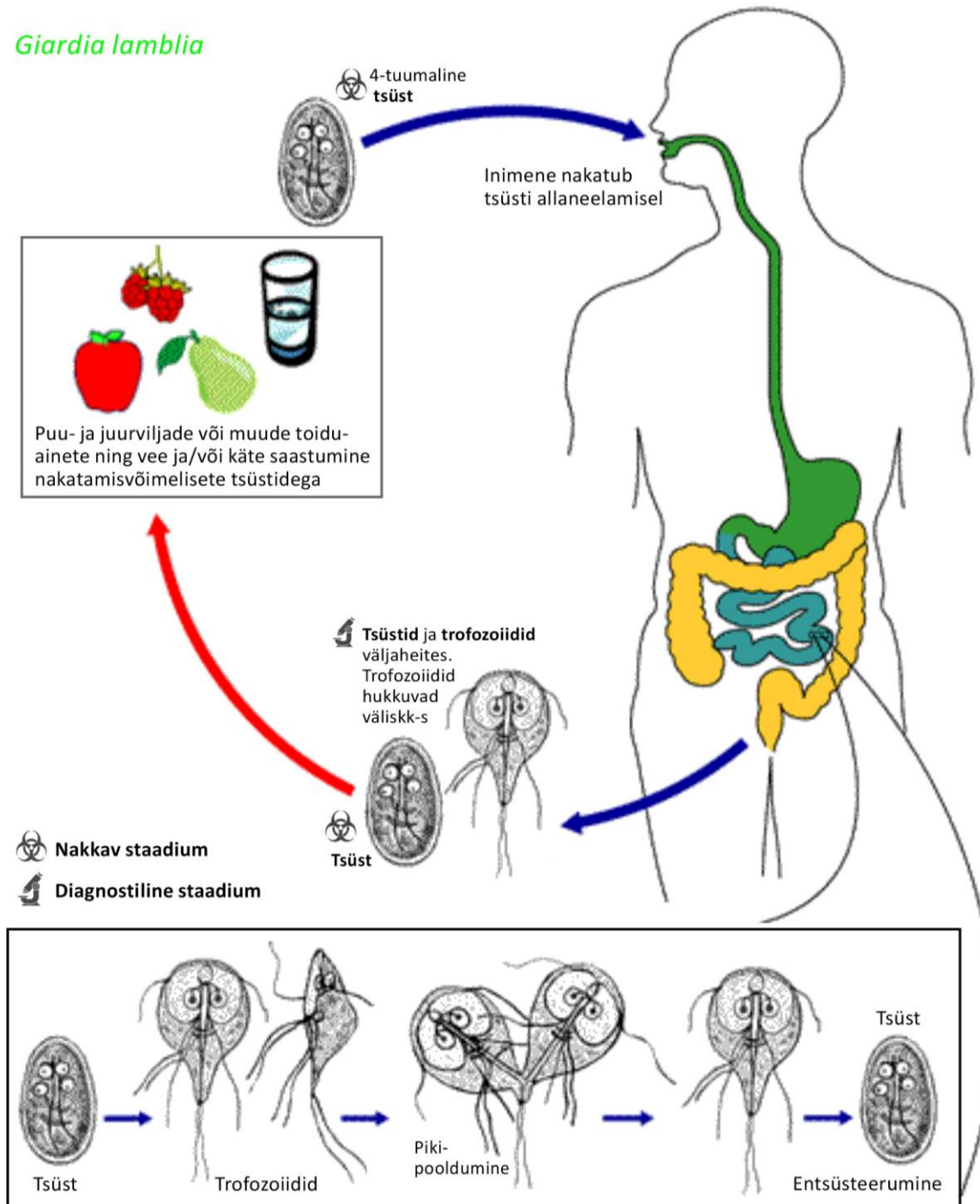
Trypanosoma cruzi



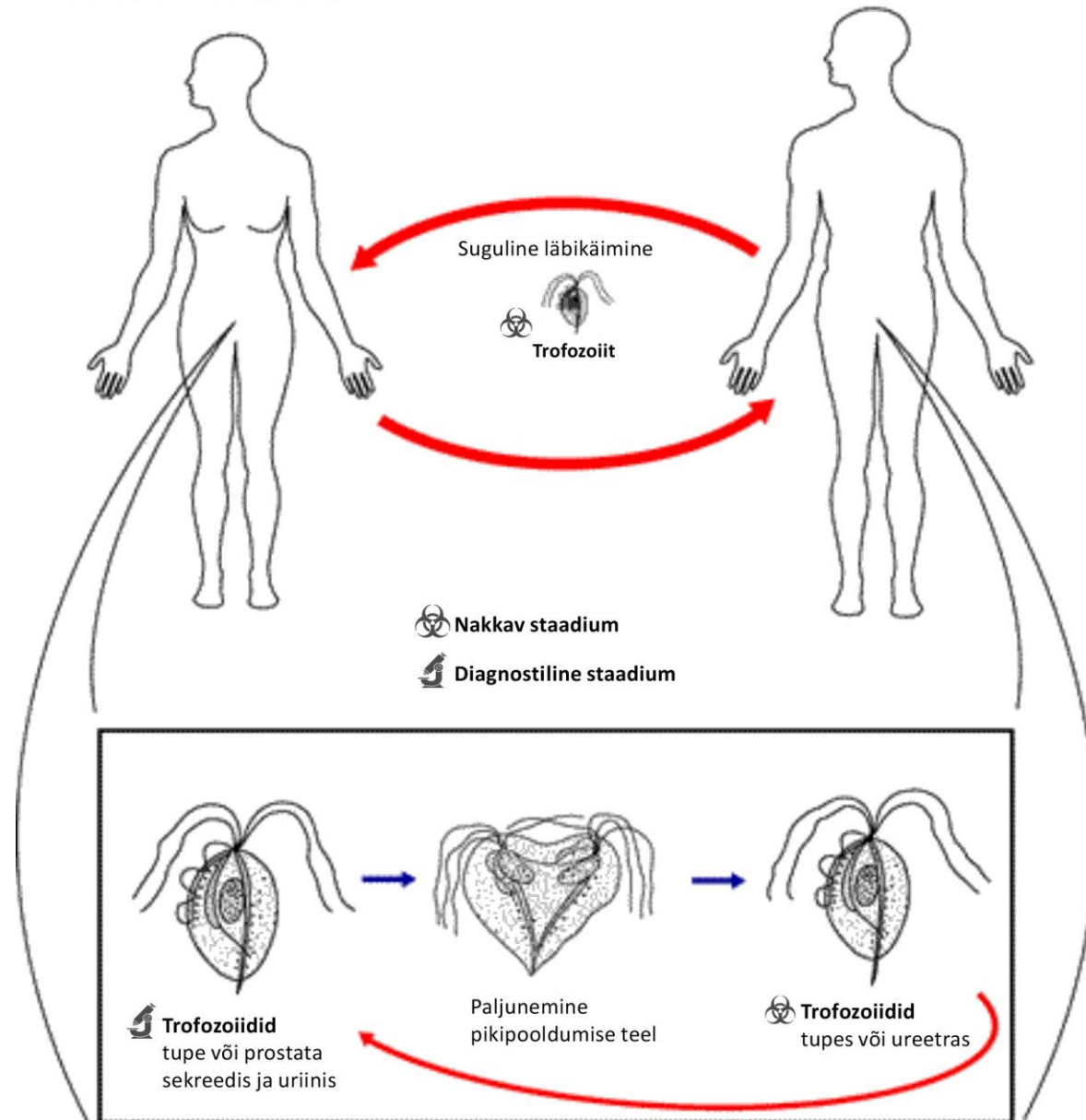
Leishmania ssp.



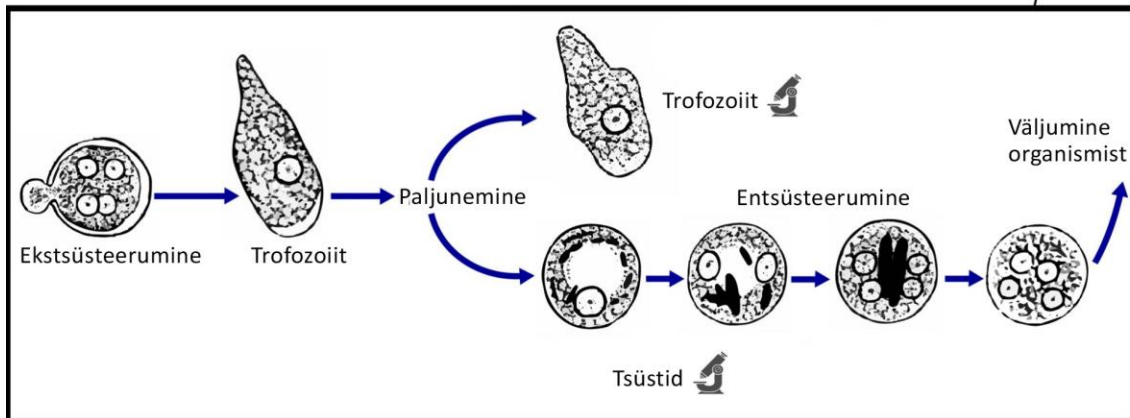
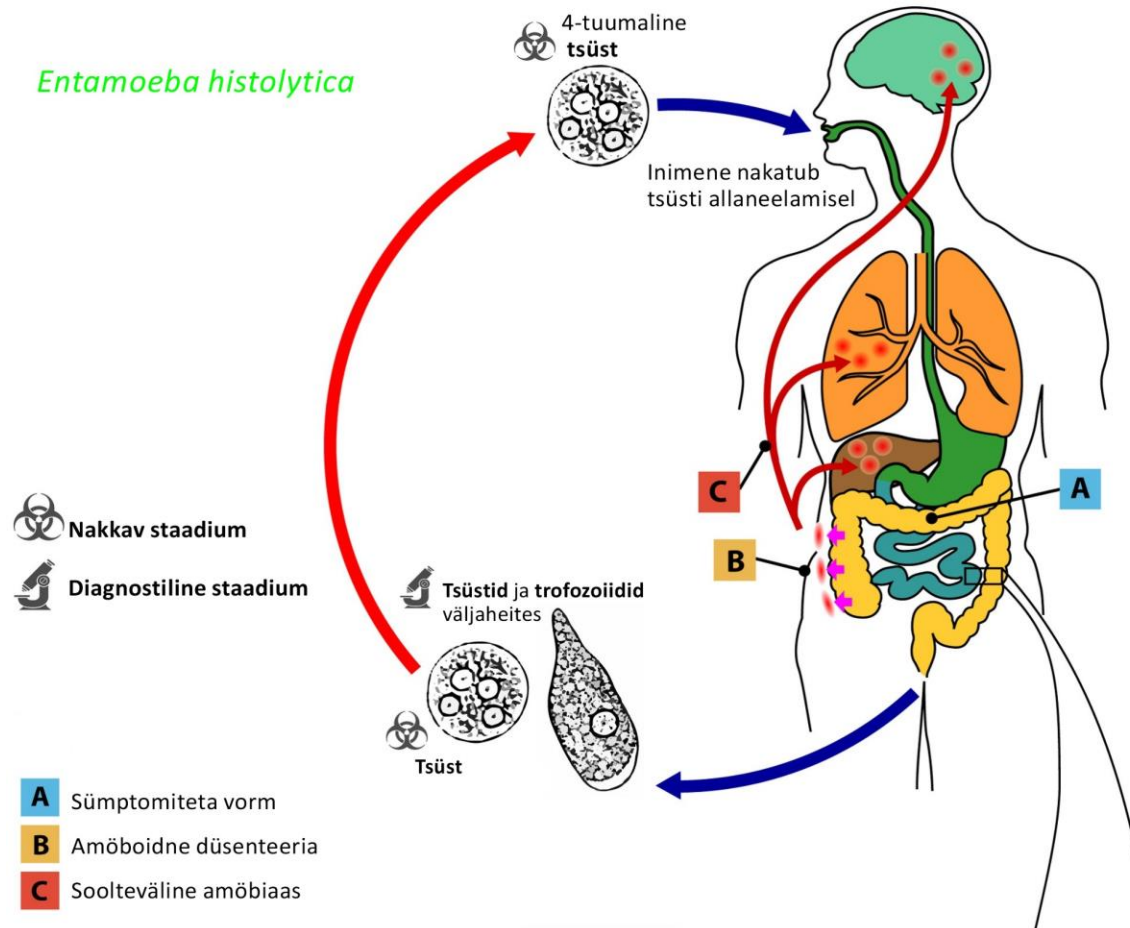
Giardia lamblia



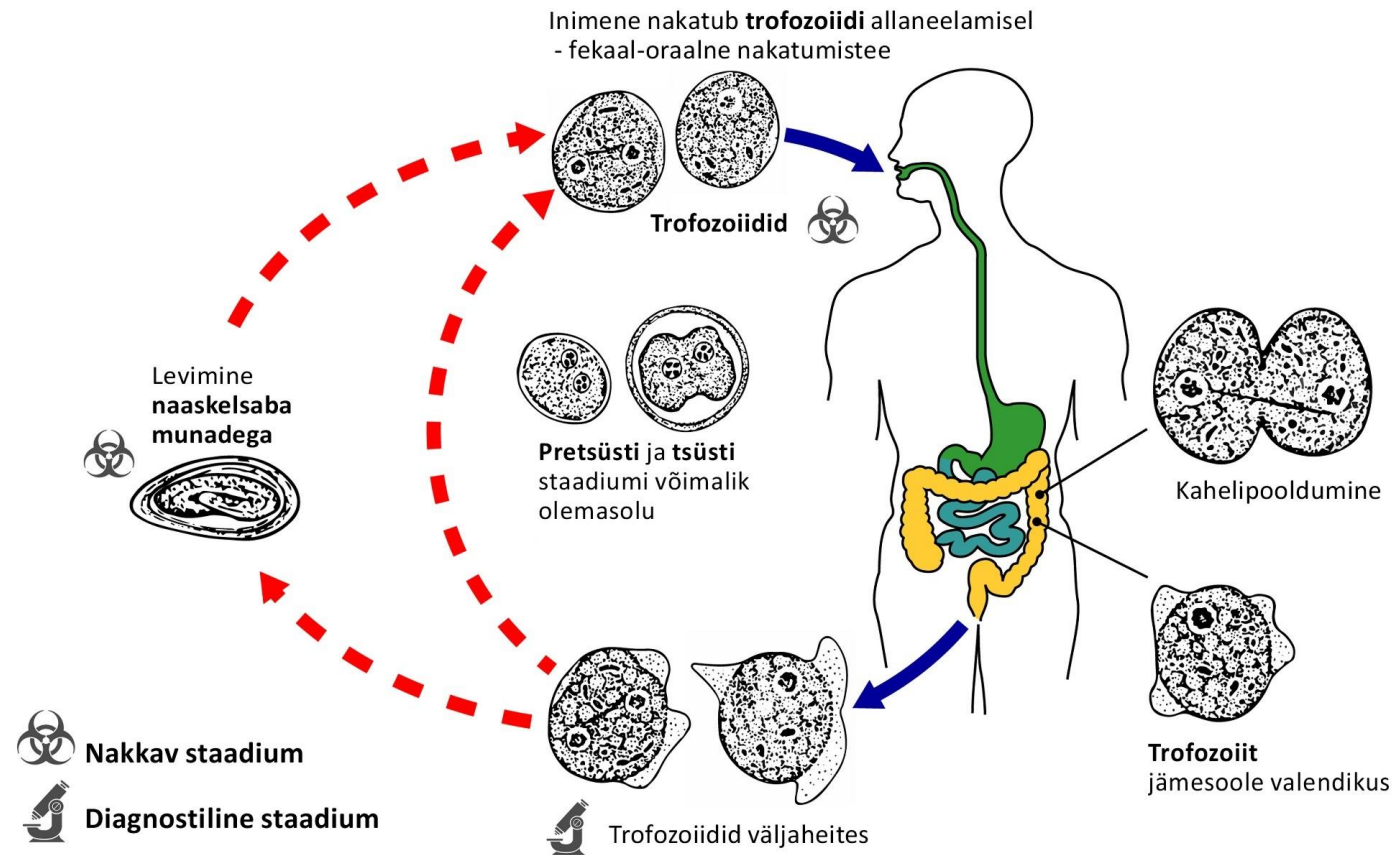
Trichomonas vaginalis



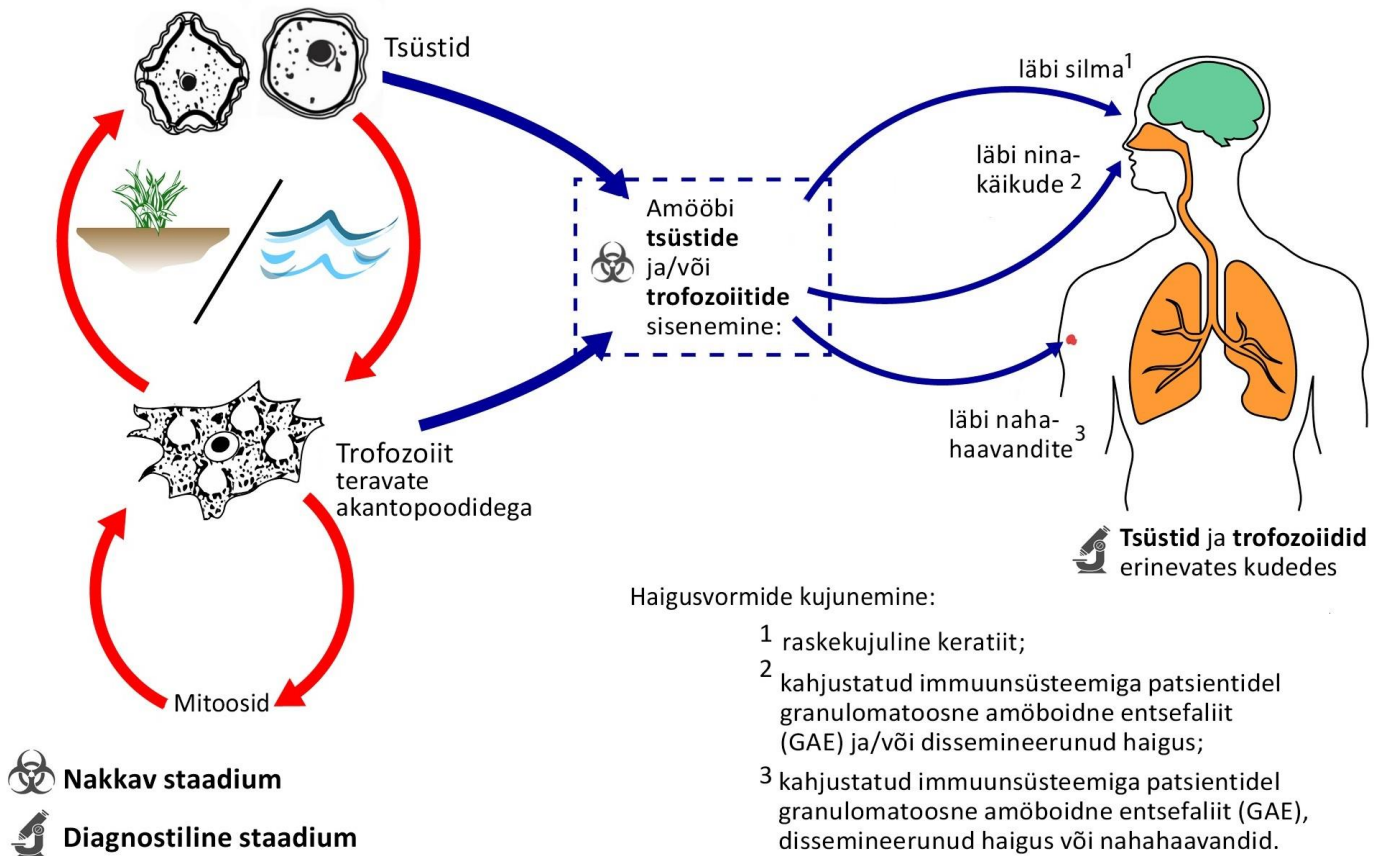
Entamoeba histolytica



Dientmoeba fragilis

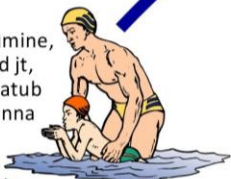


Acanthamoeba ssp.

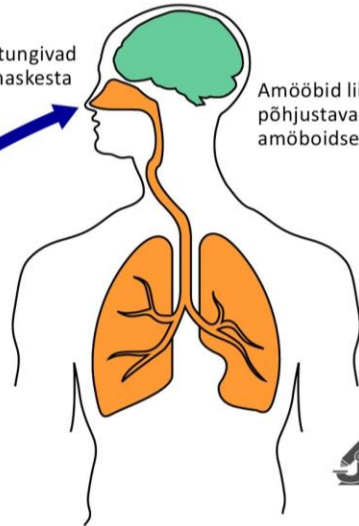


Naegleria fowleri

Veega seotud tegevused nagu ujumine, sukeldumine, veespordimängud jt, mille tulemusel satub saastunud vesi ninna

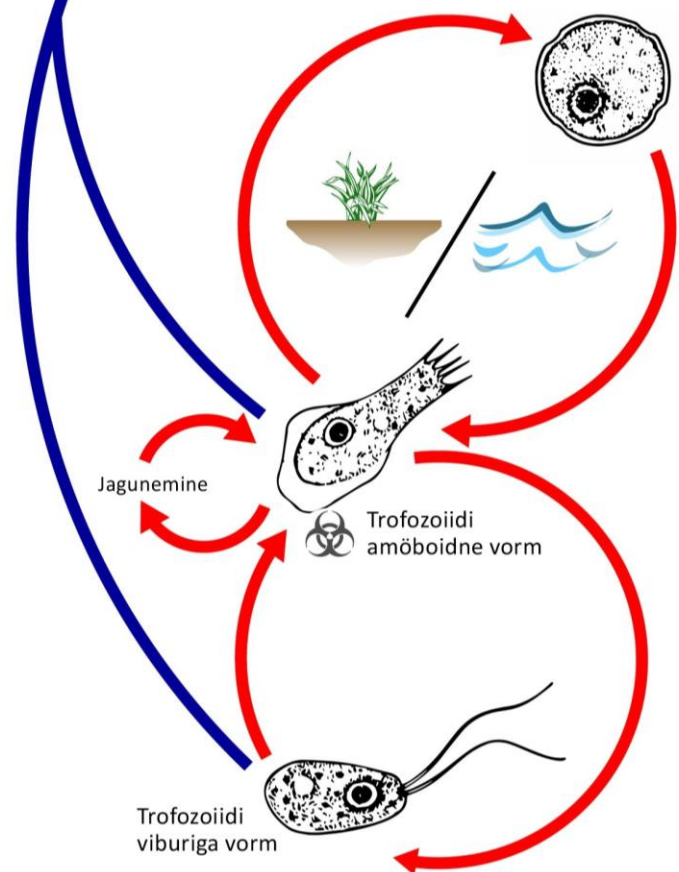


Trofozoidid tungivad ninaõõne limaskestast



Amööbid liiguvad piki haistmisnärve aju ja põhjustavad tervetel inimestel primaarset amööboidset meningoentsefaliiti (PAM)

Amööboidsed tofozoidid
ninalimas, seljaajuvedelikus ja ajukoes;
üksikud viburiga vormid seljaajuvedelikus




Jagunemine

Trofozoidi amööboidne vorm

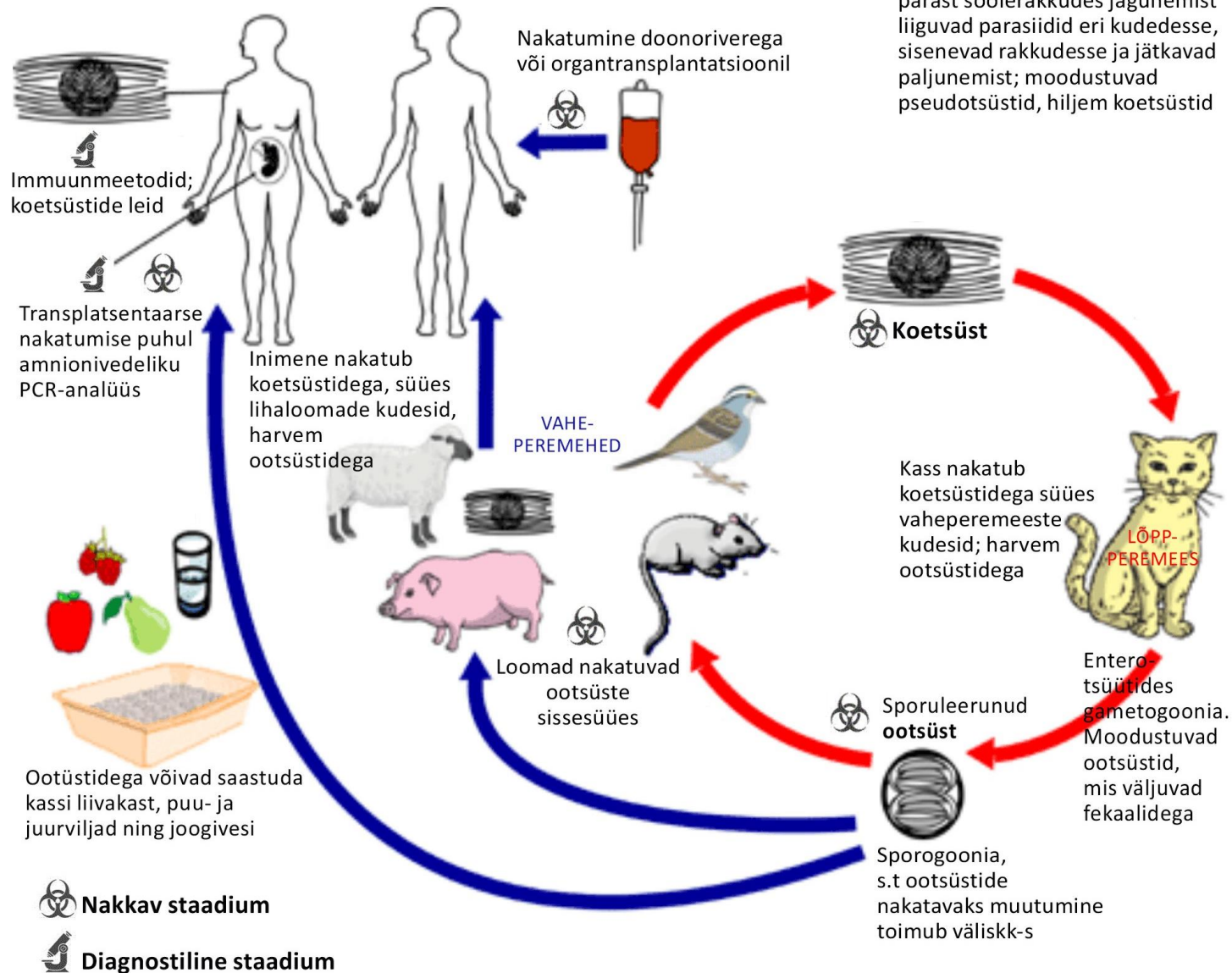
Tsüst

Trofozoidi viburiga vorm

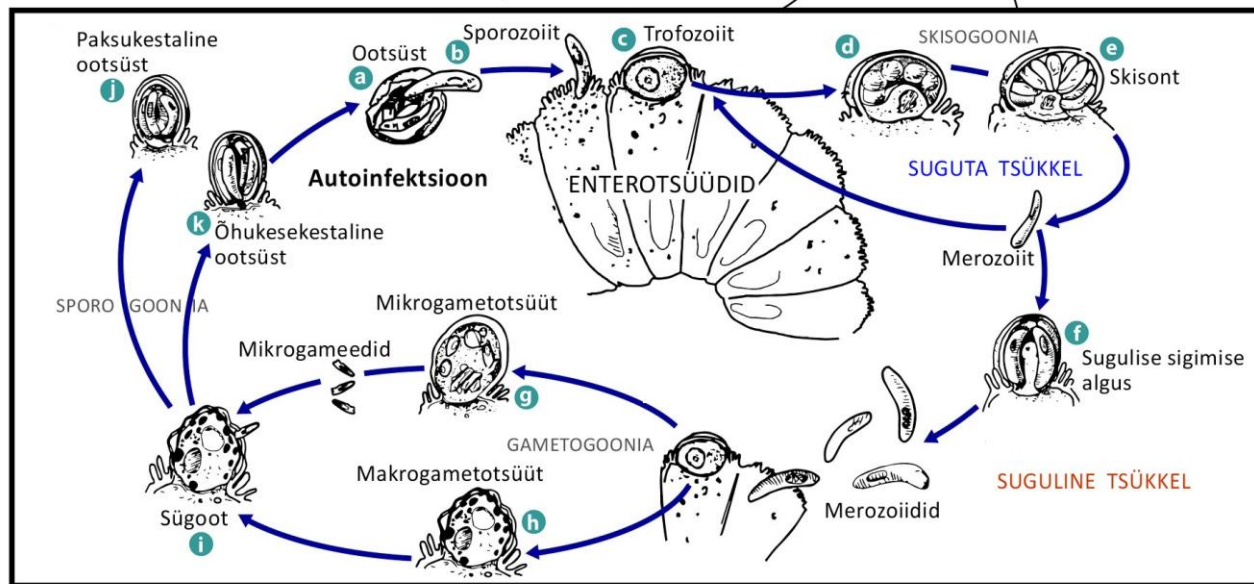
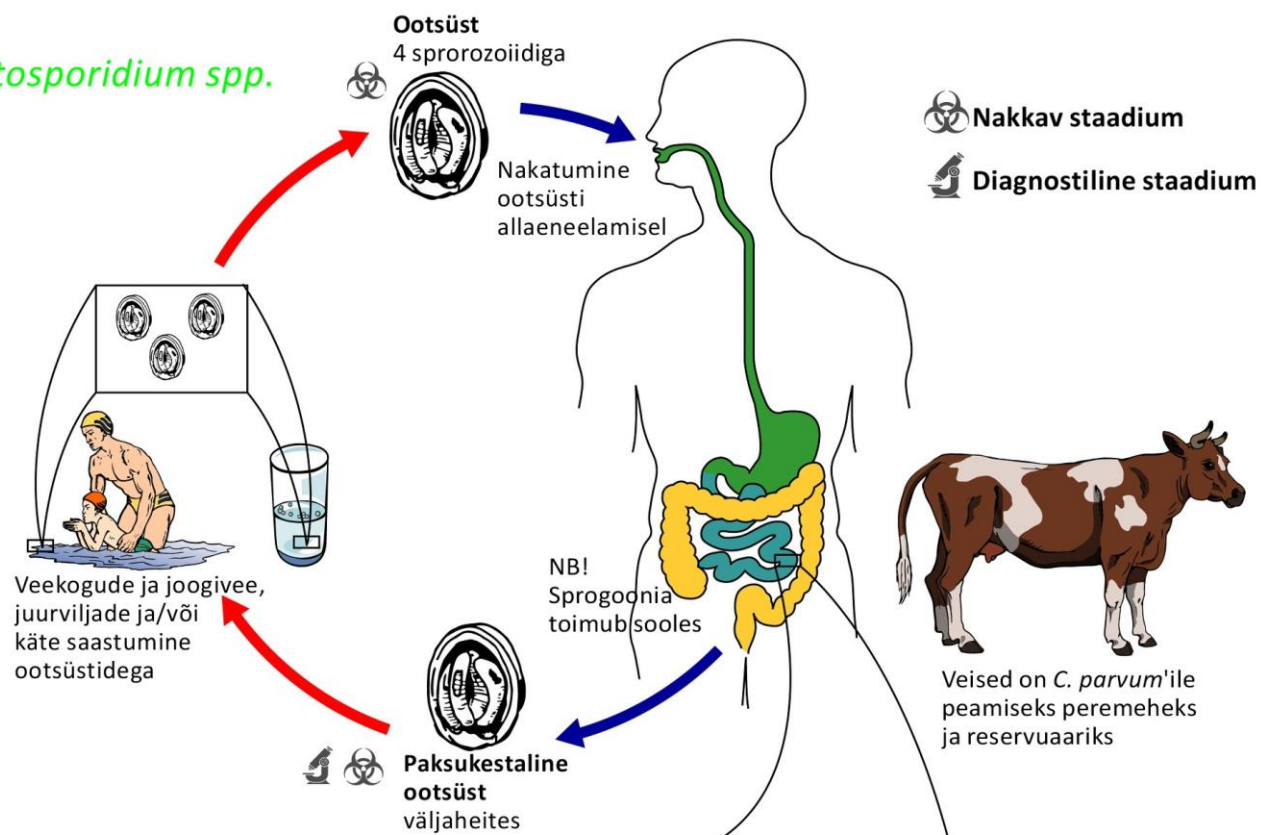
 Nakkav staadium

 Diagnostiline staadium

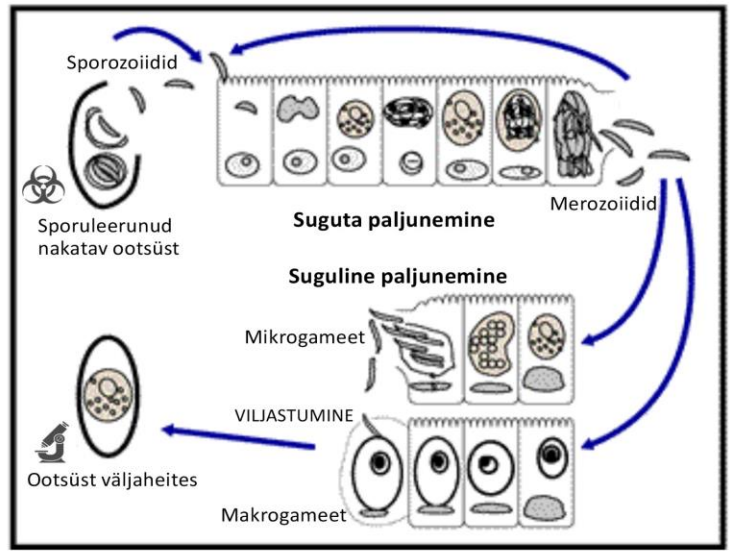
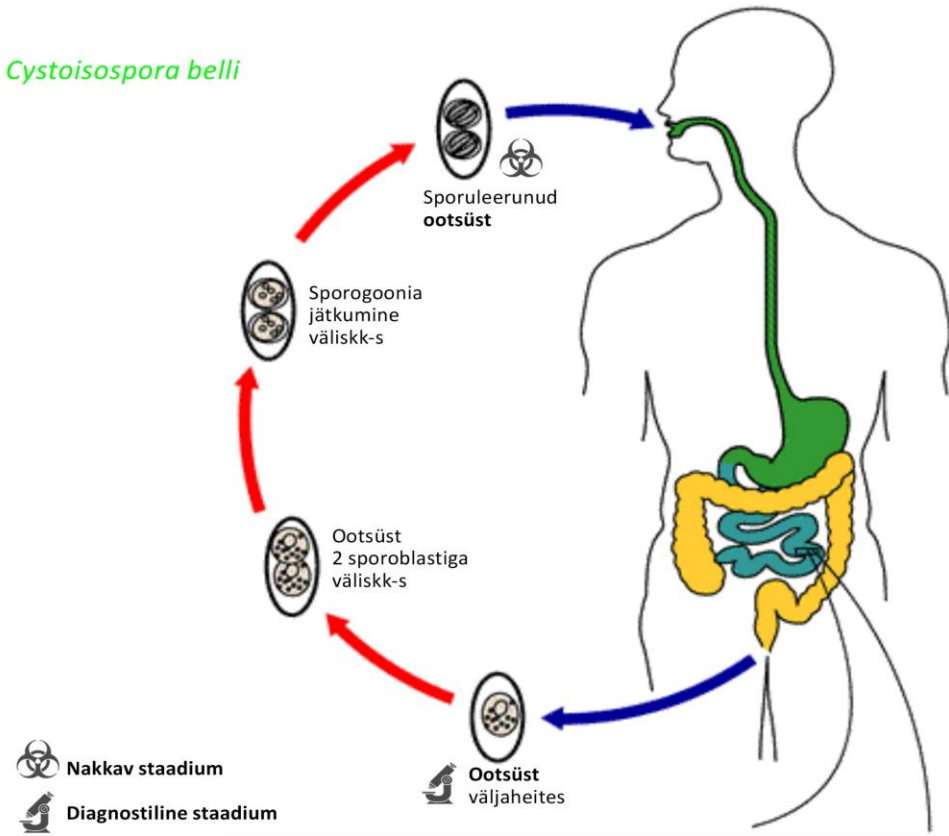
Toxoplasma gondii



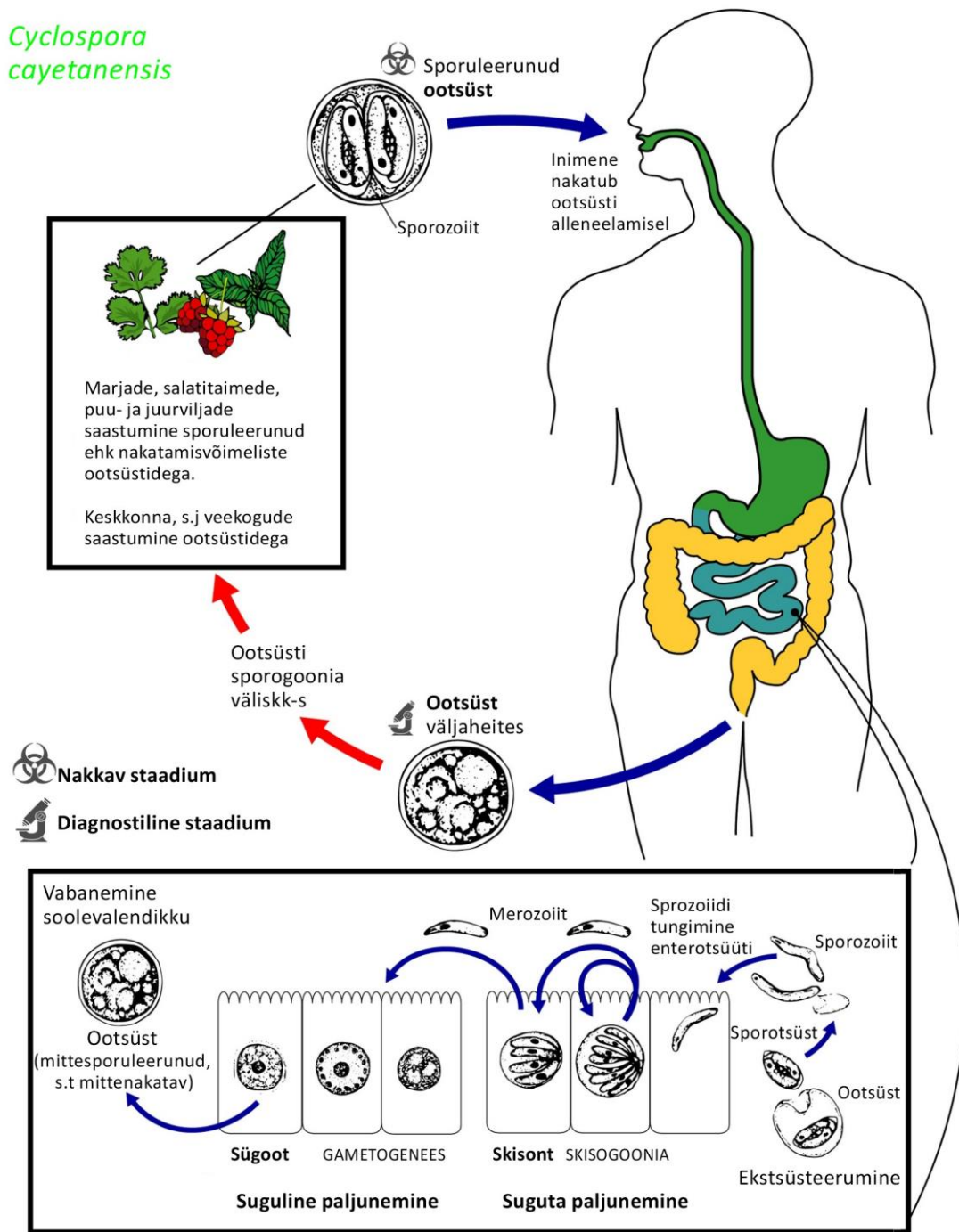
Cryptosporidium spp.



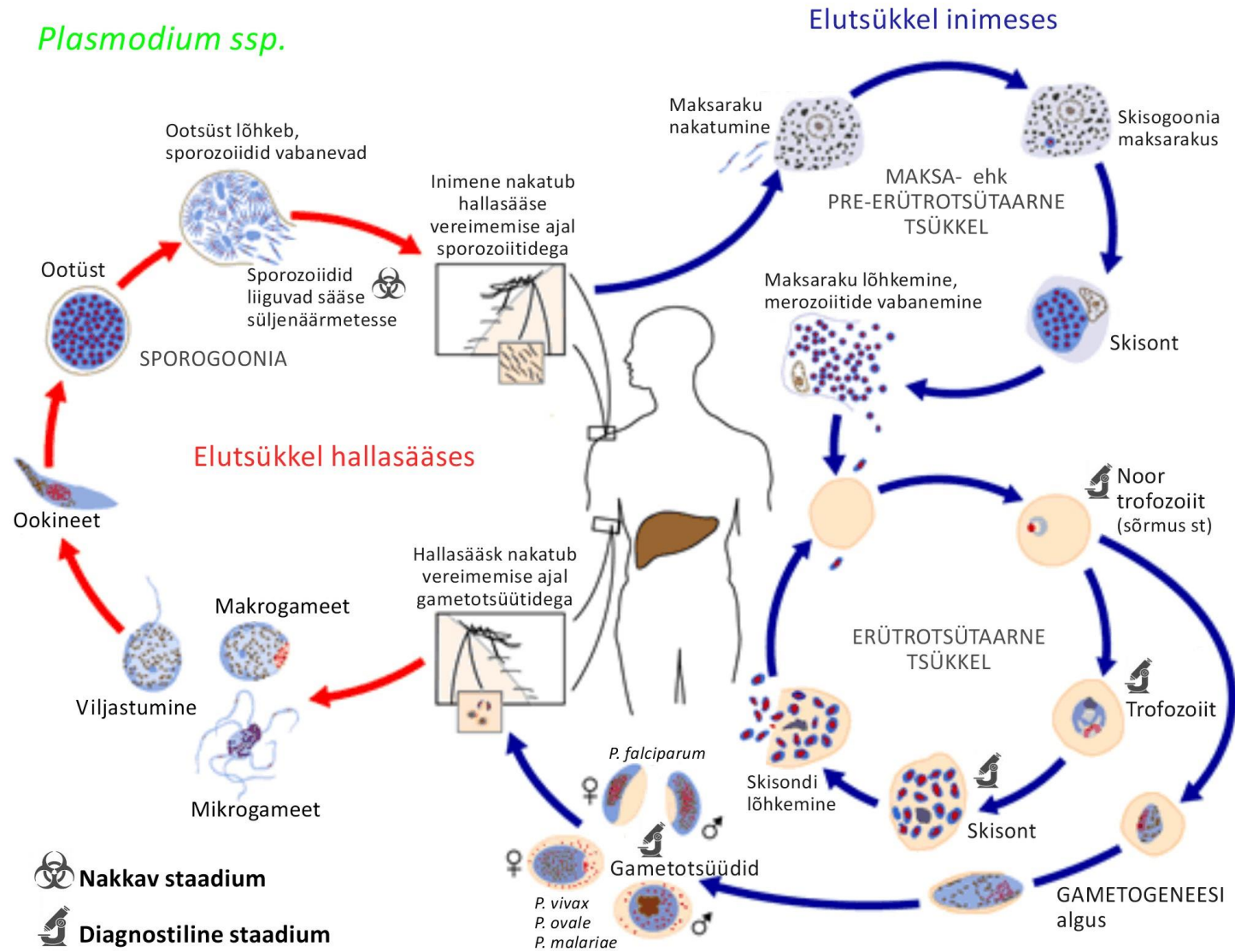
Cystoisospora belli



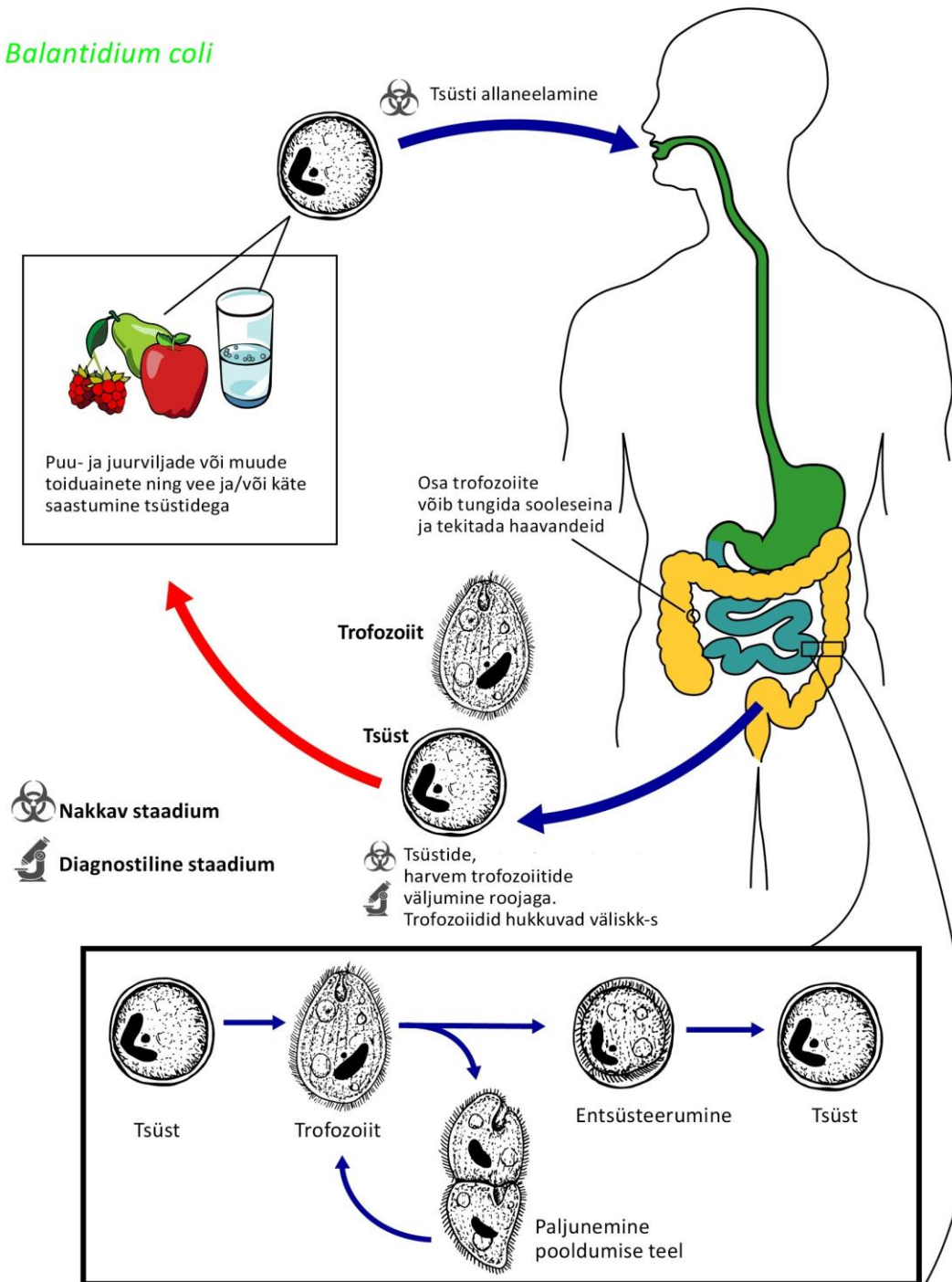
Cyclospora cayentanensis



Plasmodium ssp.



Balantidium coli

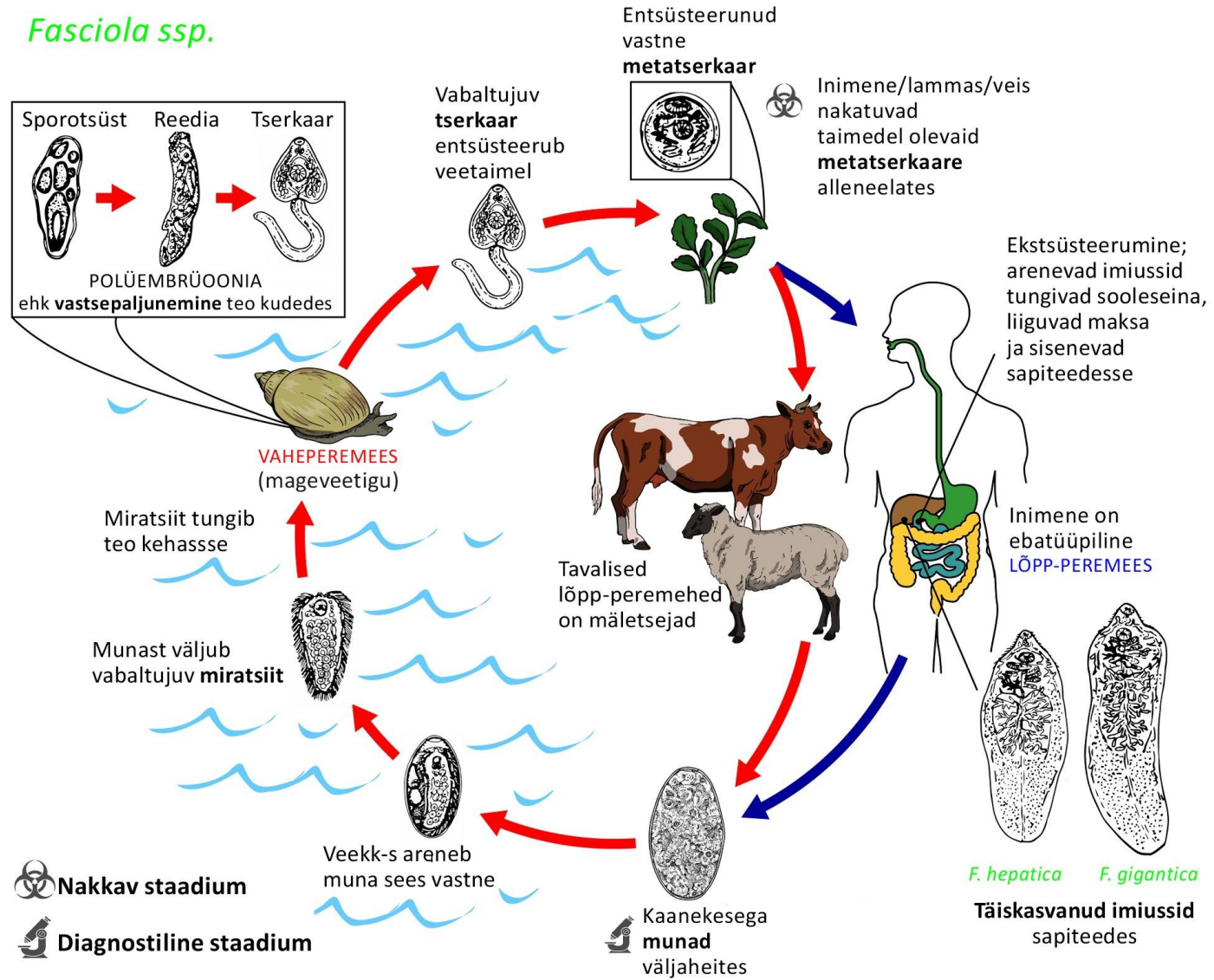


VALIK PARASIITIDE ELUTSÜKLEID

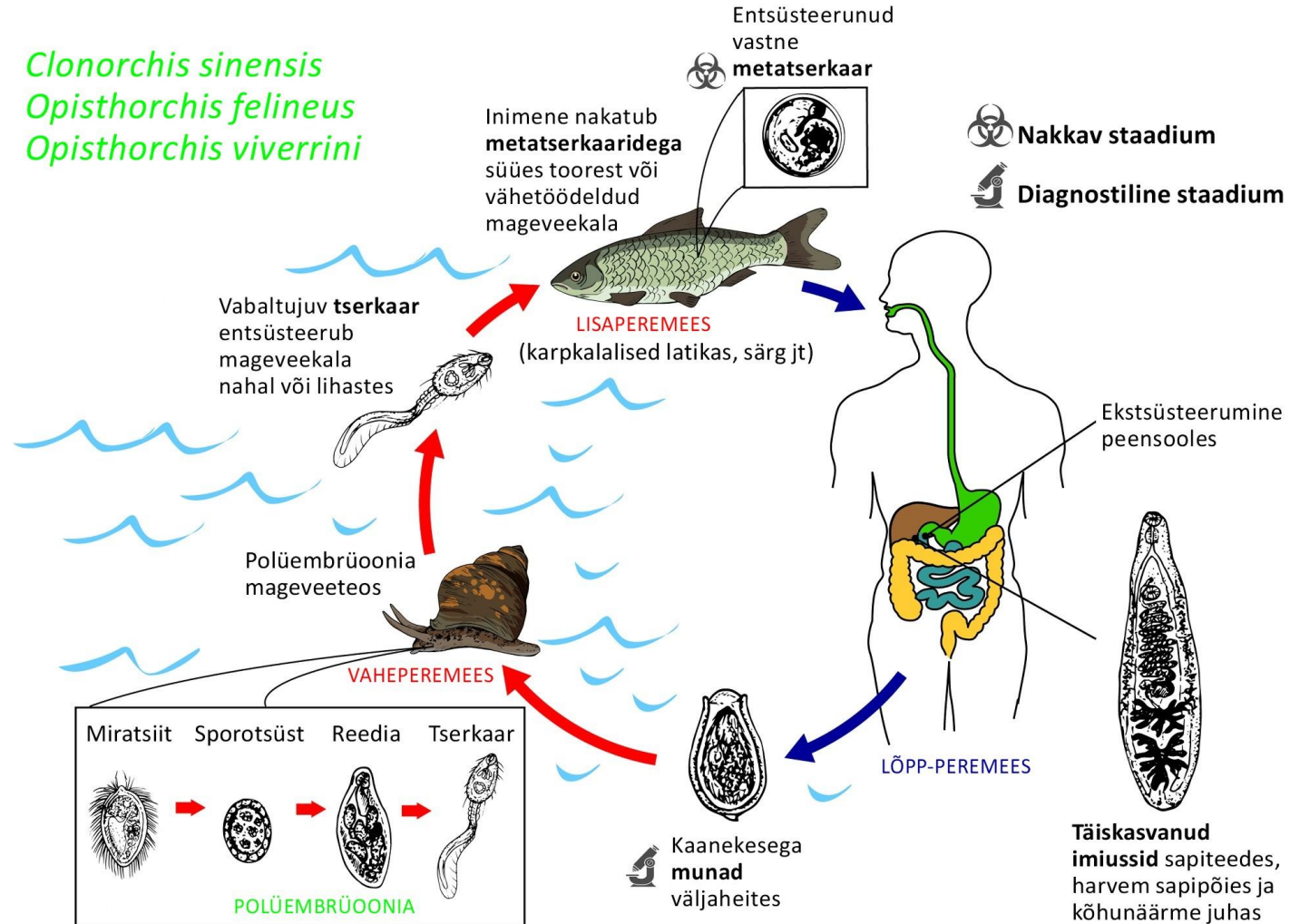
Inimese hulkraksed parasiidid

Tõlgitud ja kohandatud leheküljelt *Centers for Disease Control and Prevention* <https://www.cdc.gov/dpdx/index.html>

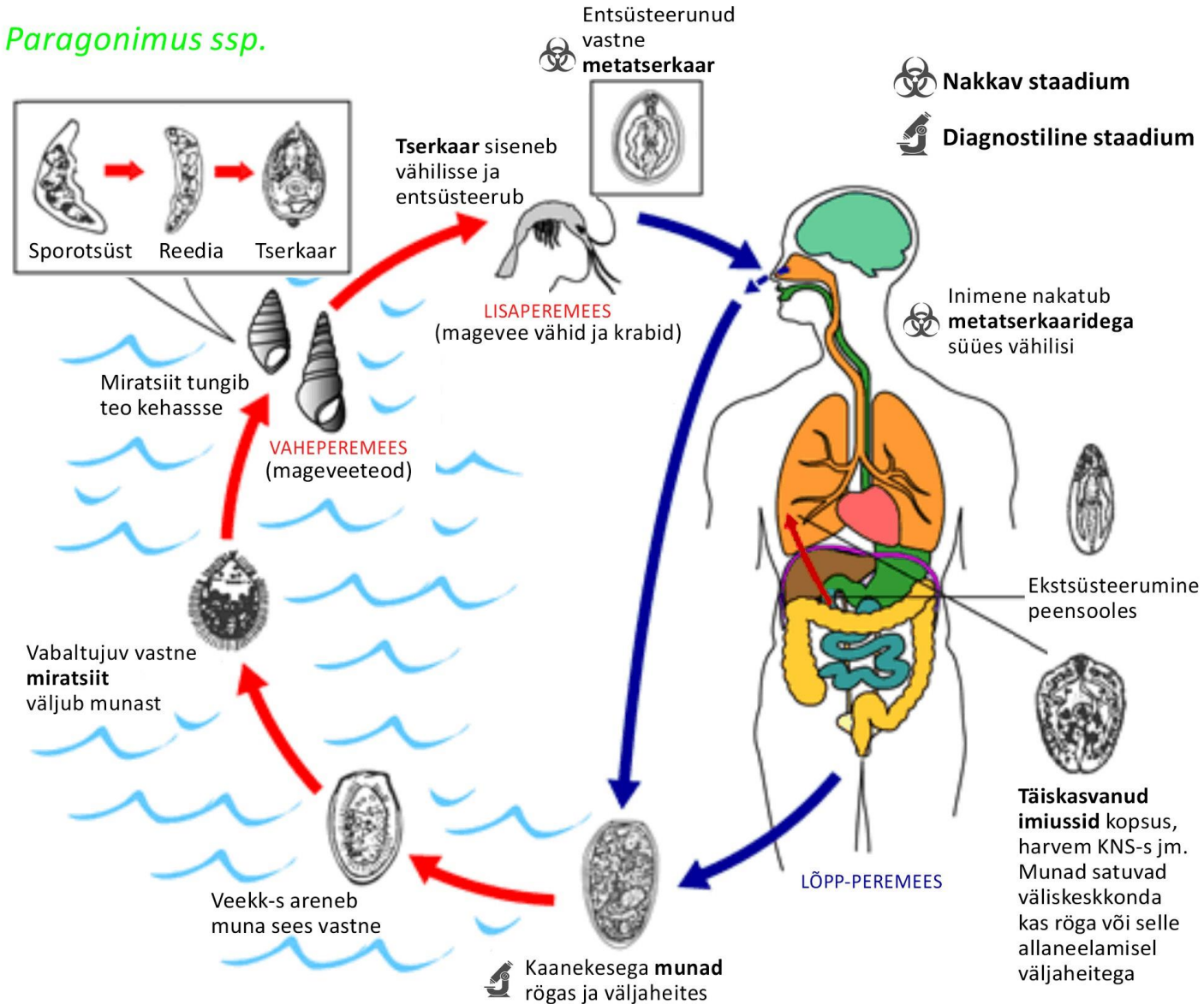
Fasciola ssp.





Clonorchis sinensis
Opisthorchis felinus
Opisthorchis viverrini

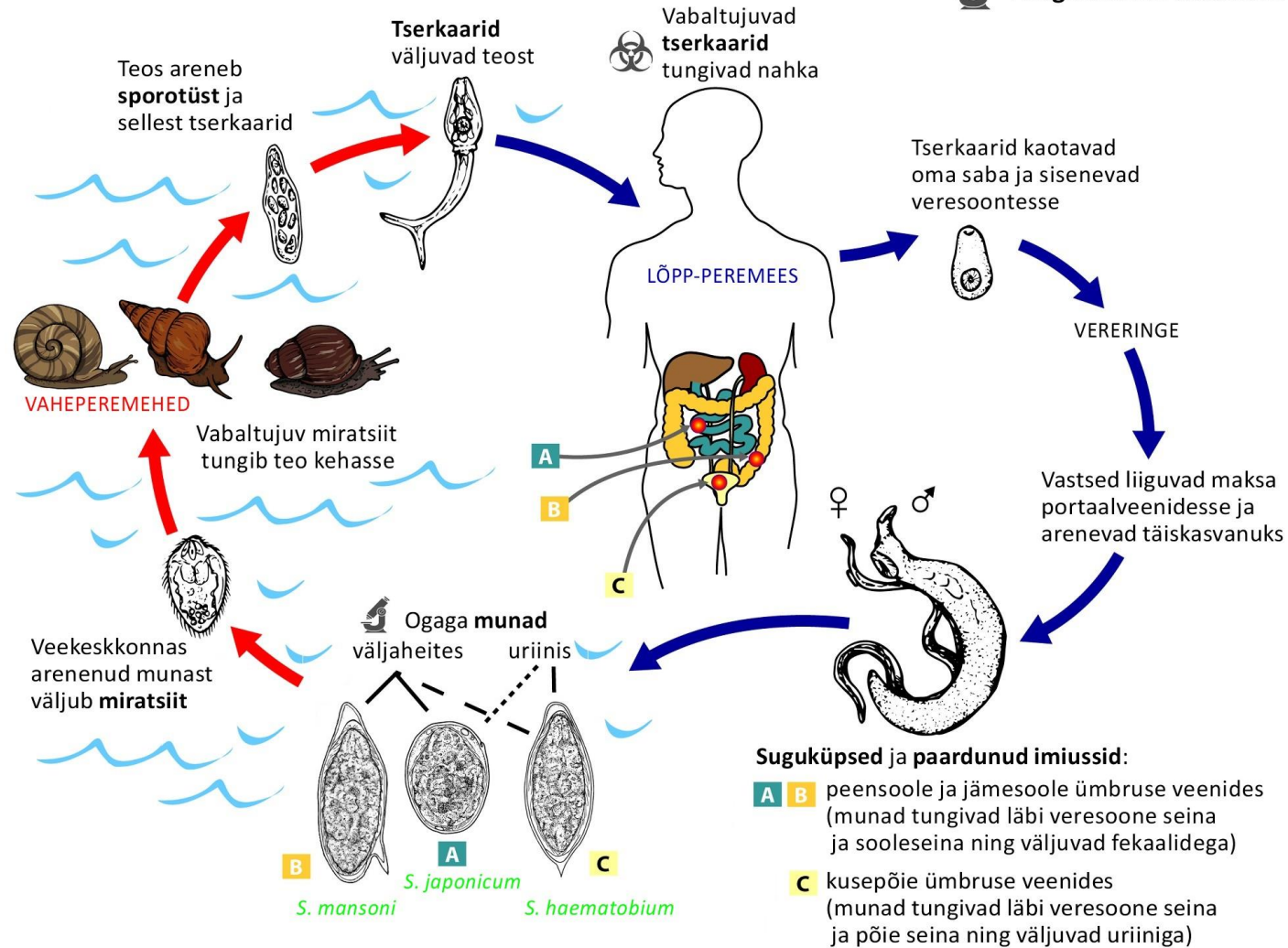


Paragonimus ssp.

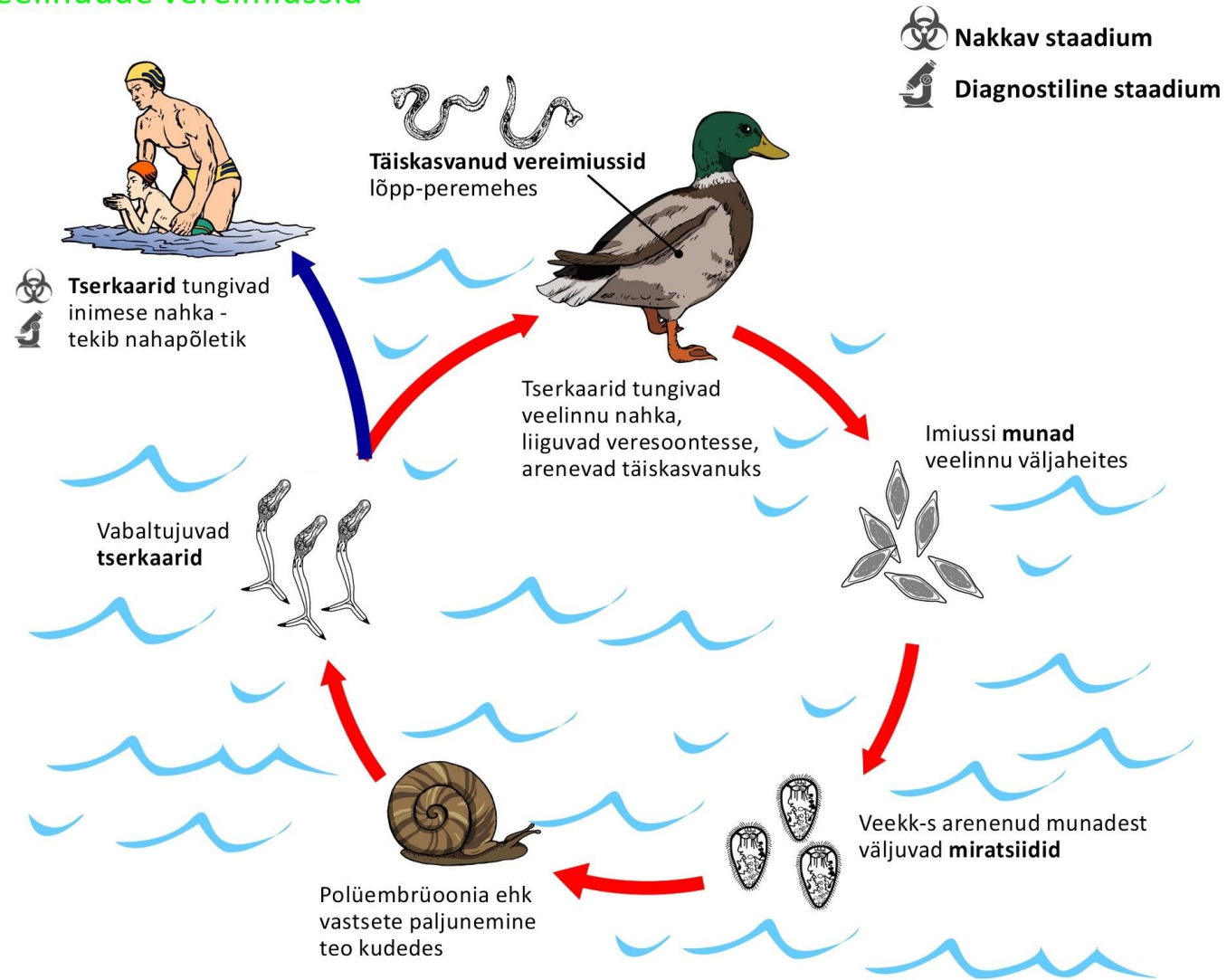


Schistosoma ssp.

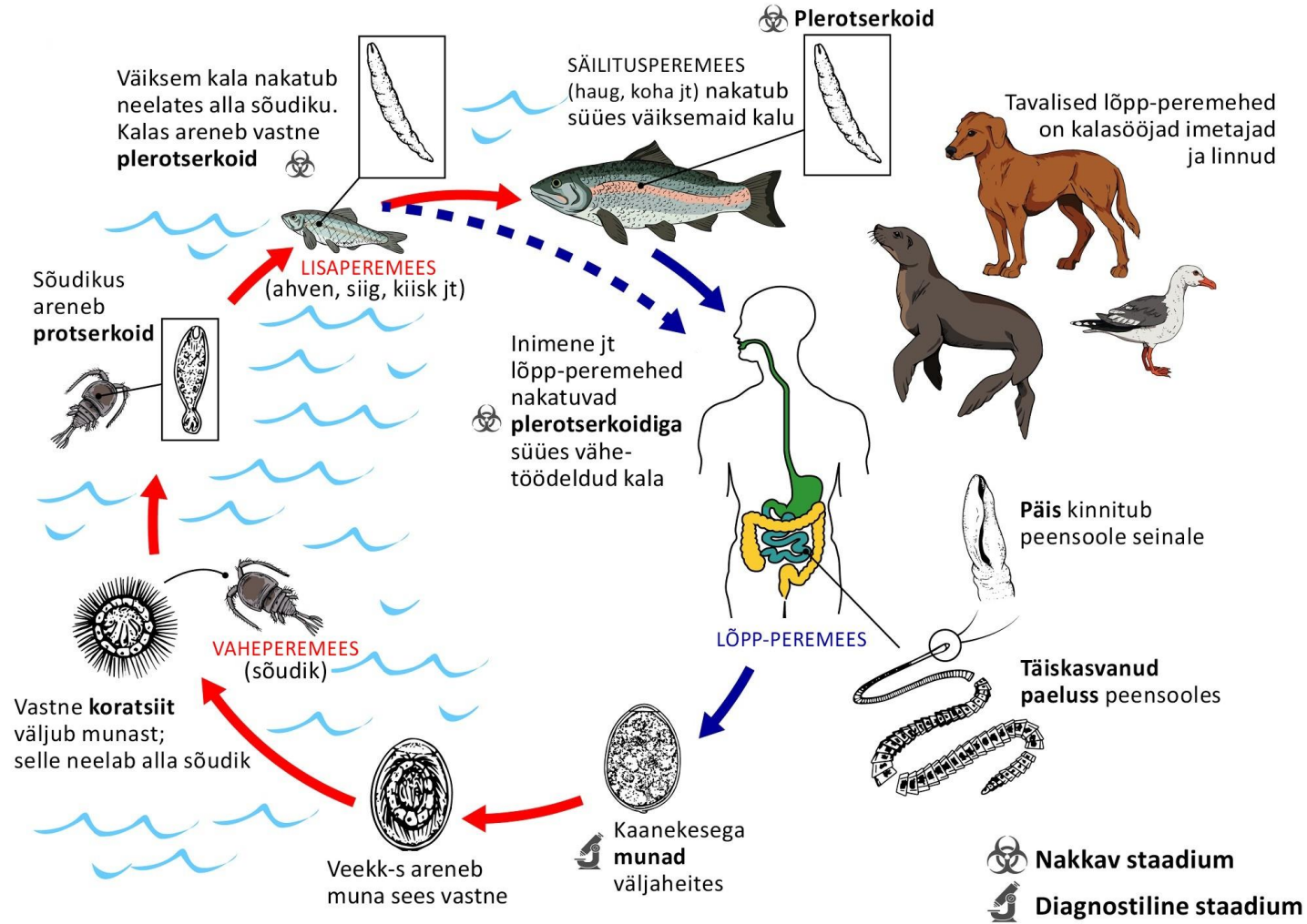
 Nakkav staadium
 Diagnostiline staadium



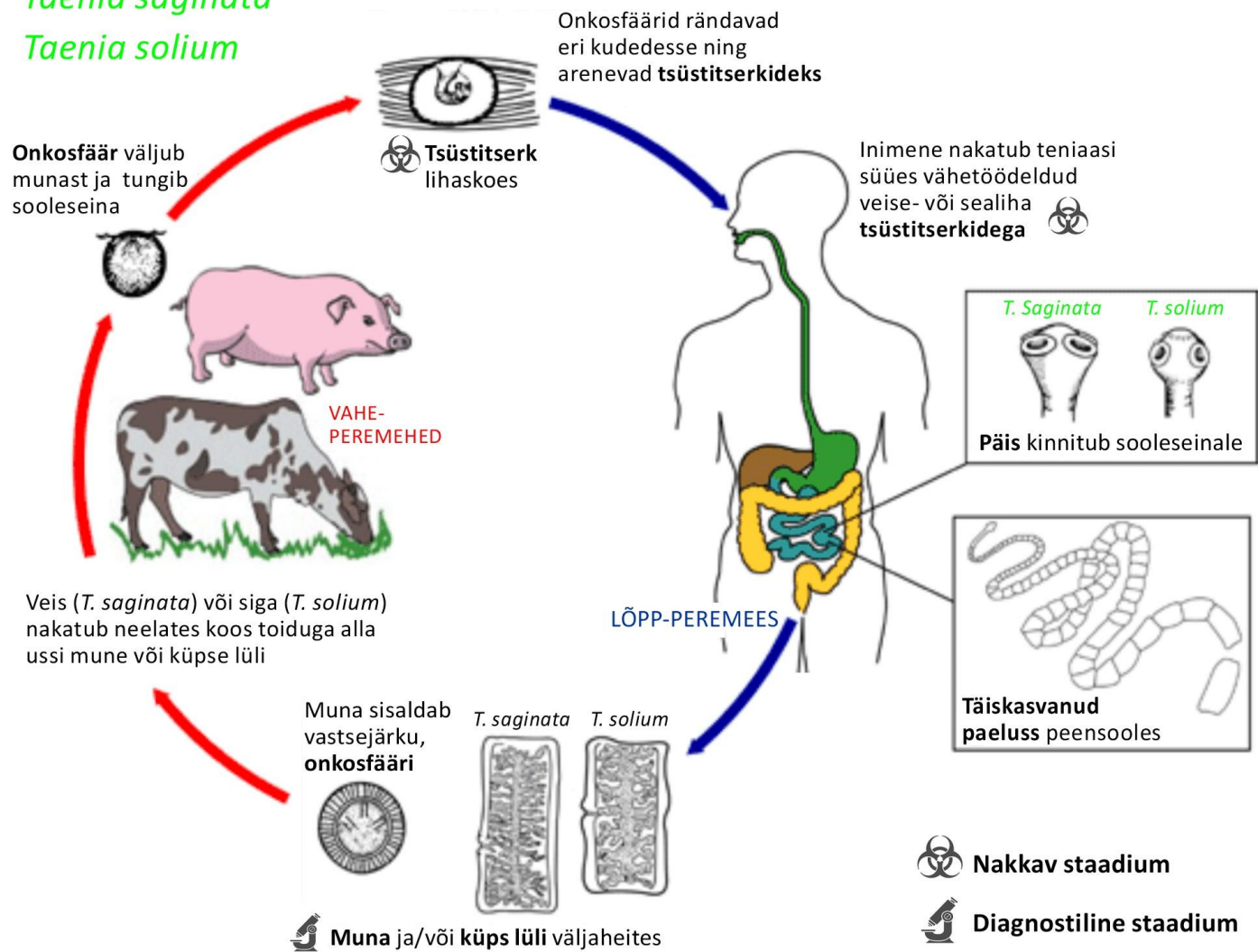
Veelindude vereimiussid



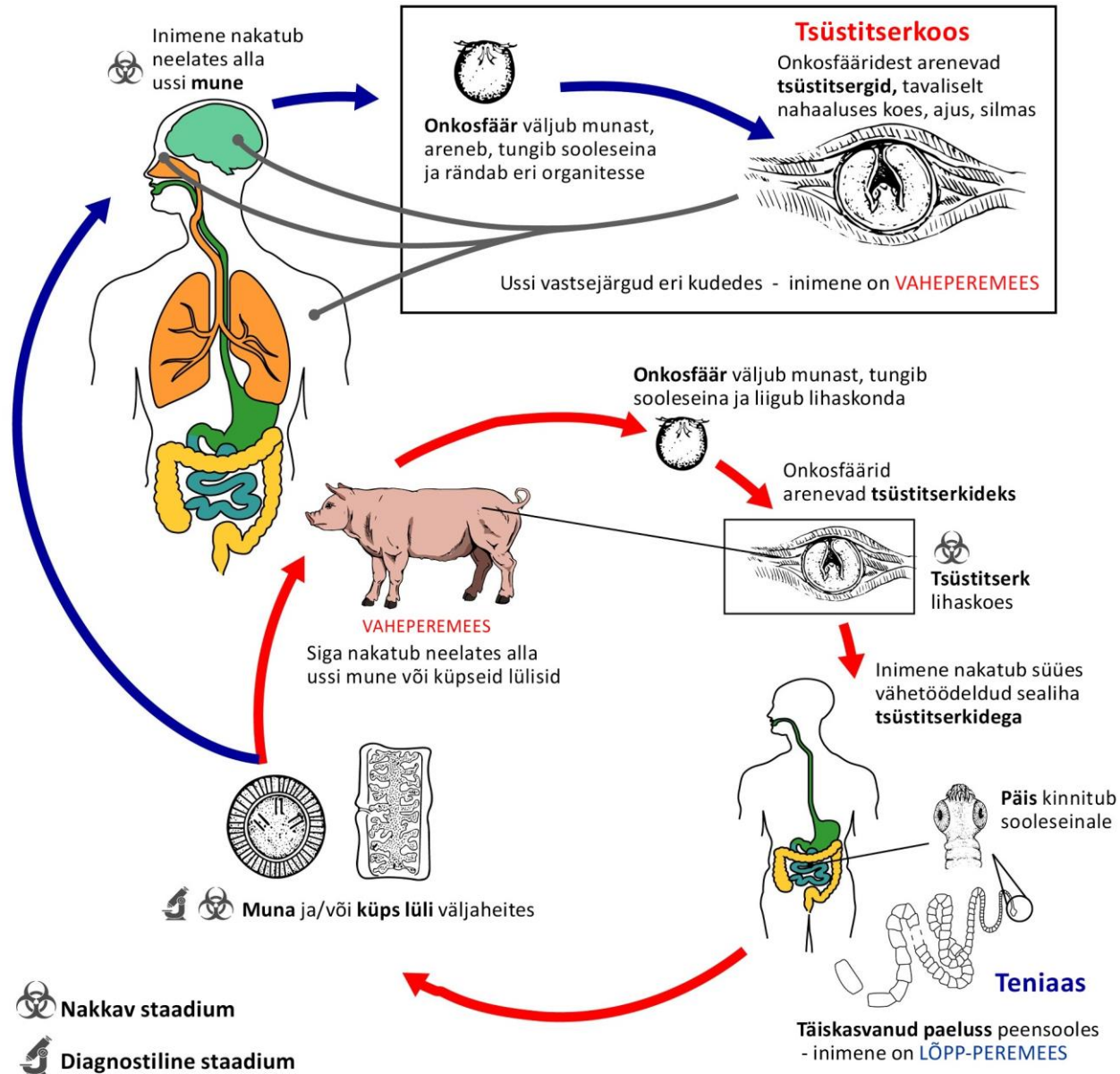
Diphyllobothrium ssp.



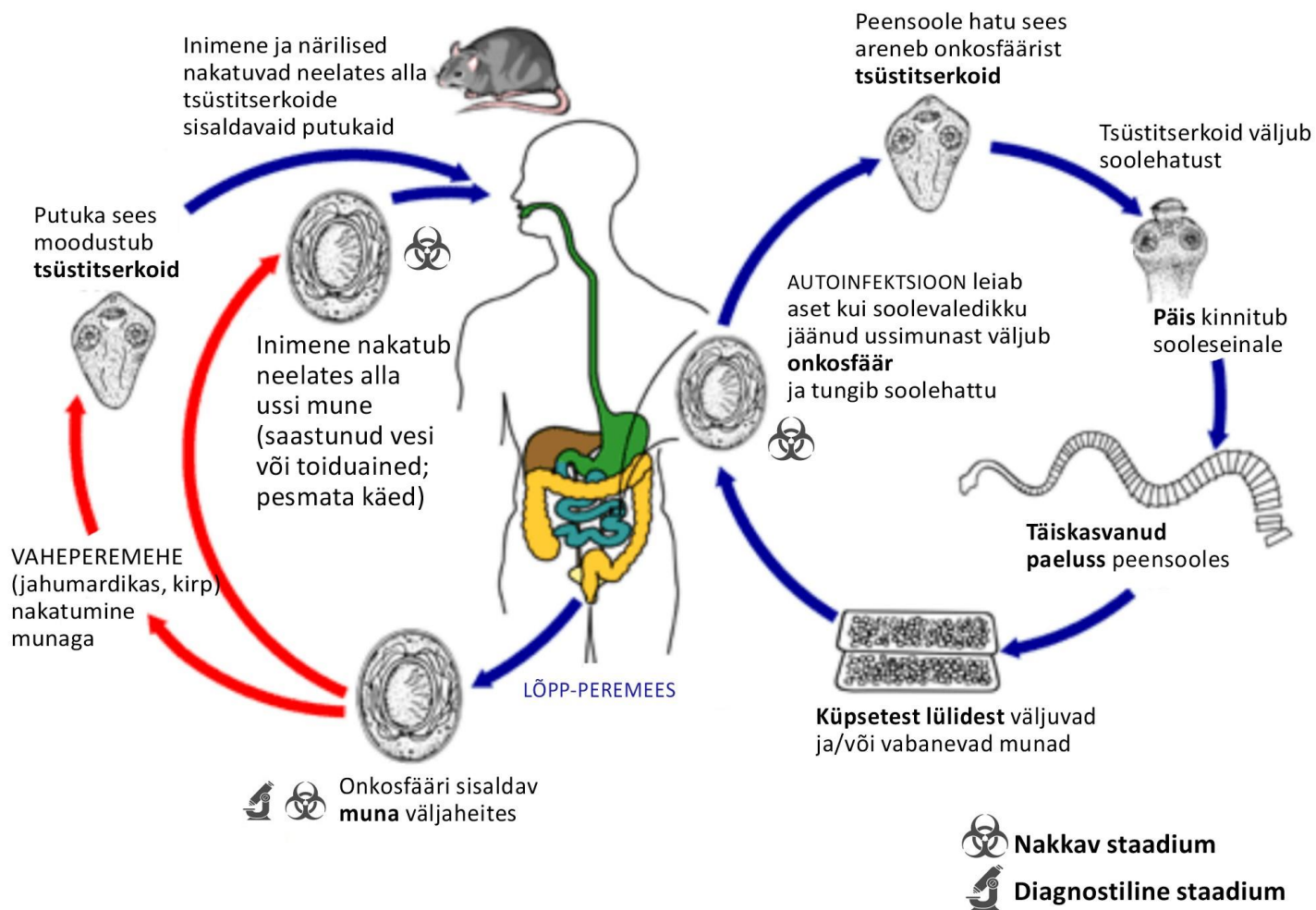
Taenia saginata
Taenia solium



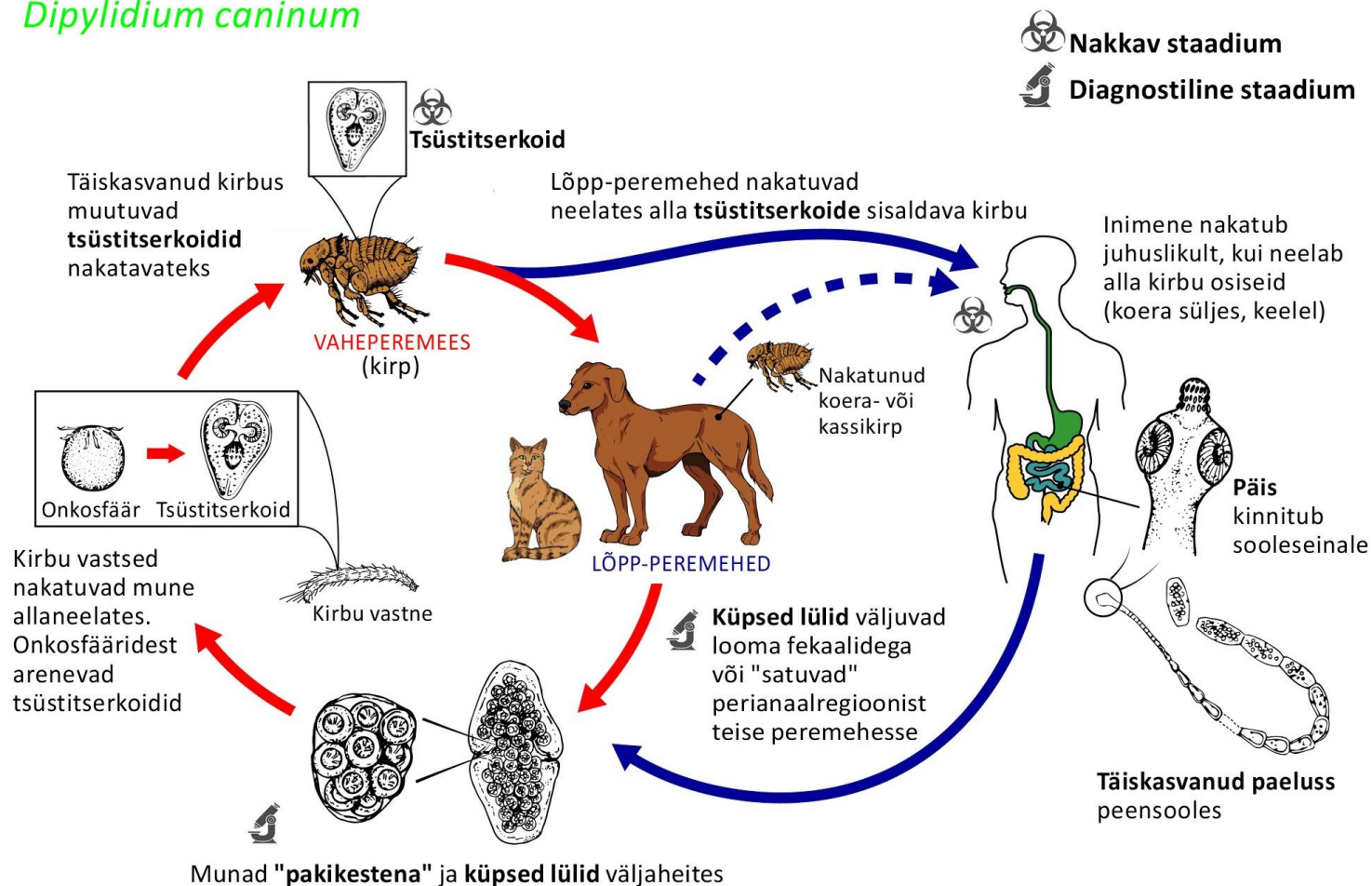
Taenia solium



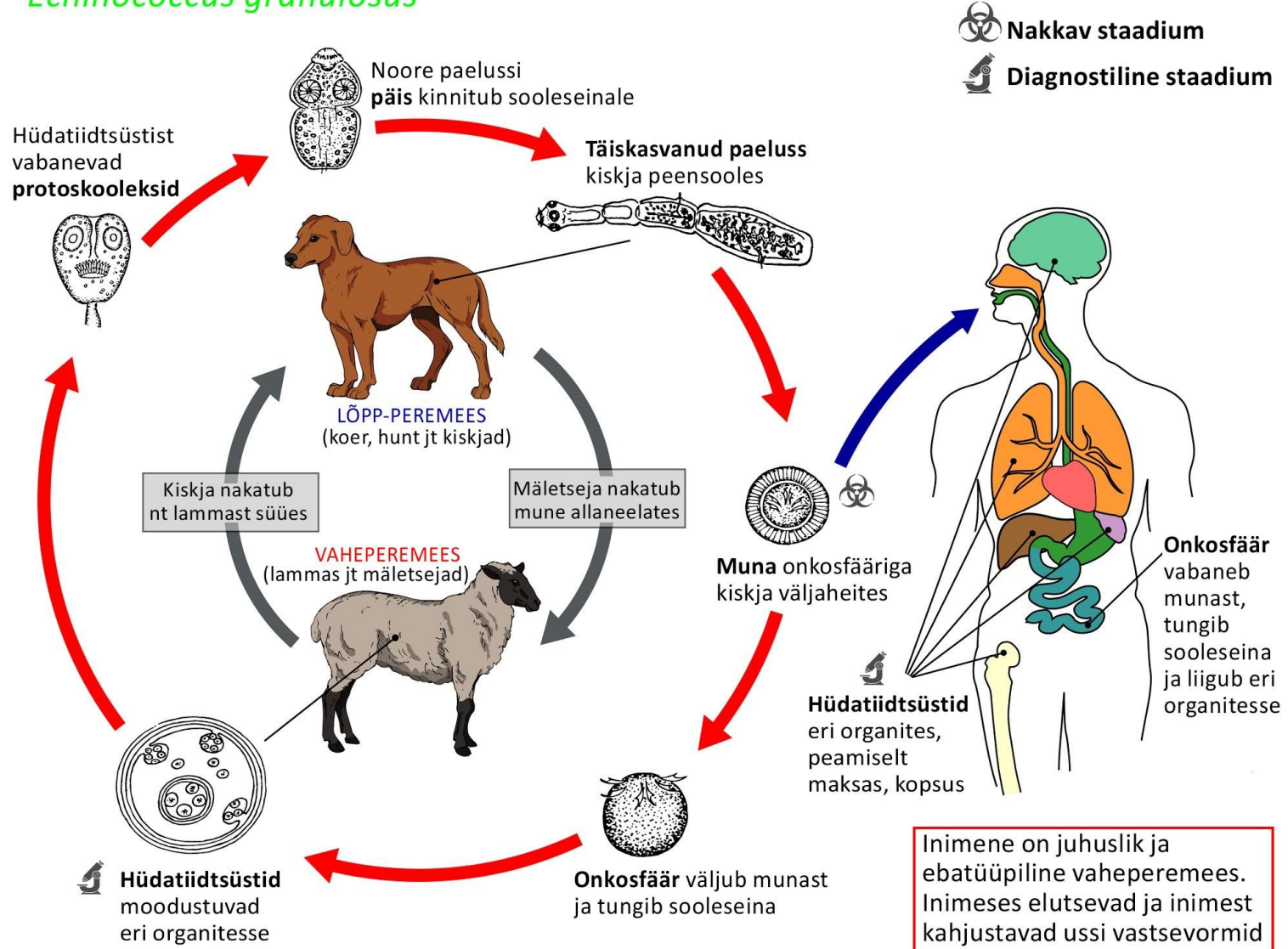
Hymenolepis nana





Dipylidium caninum

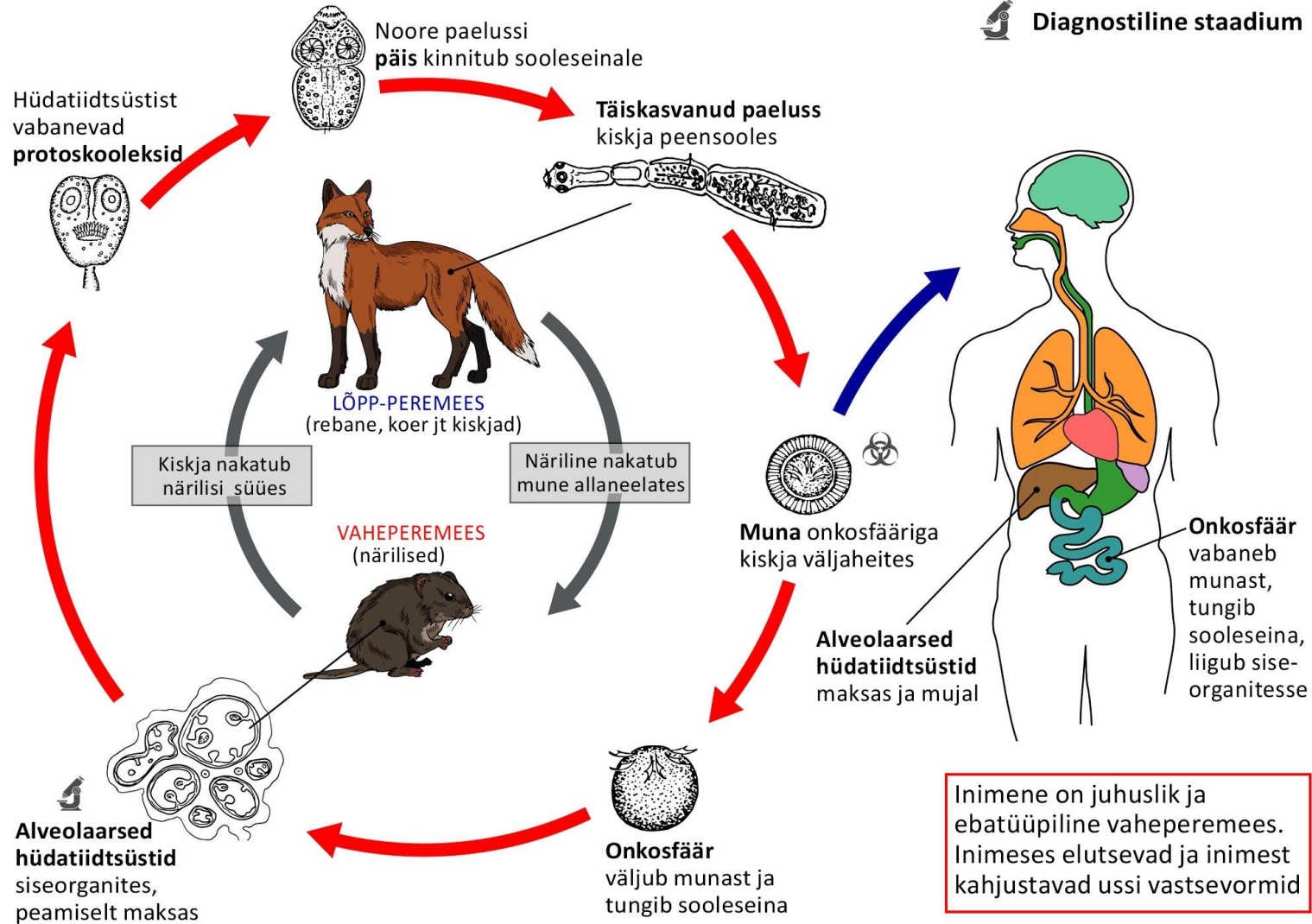


Echinococcus granulosus





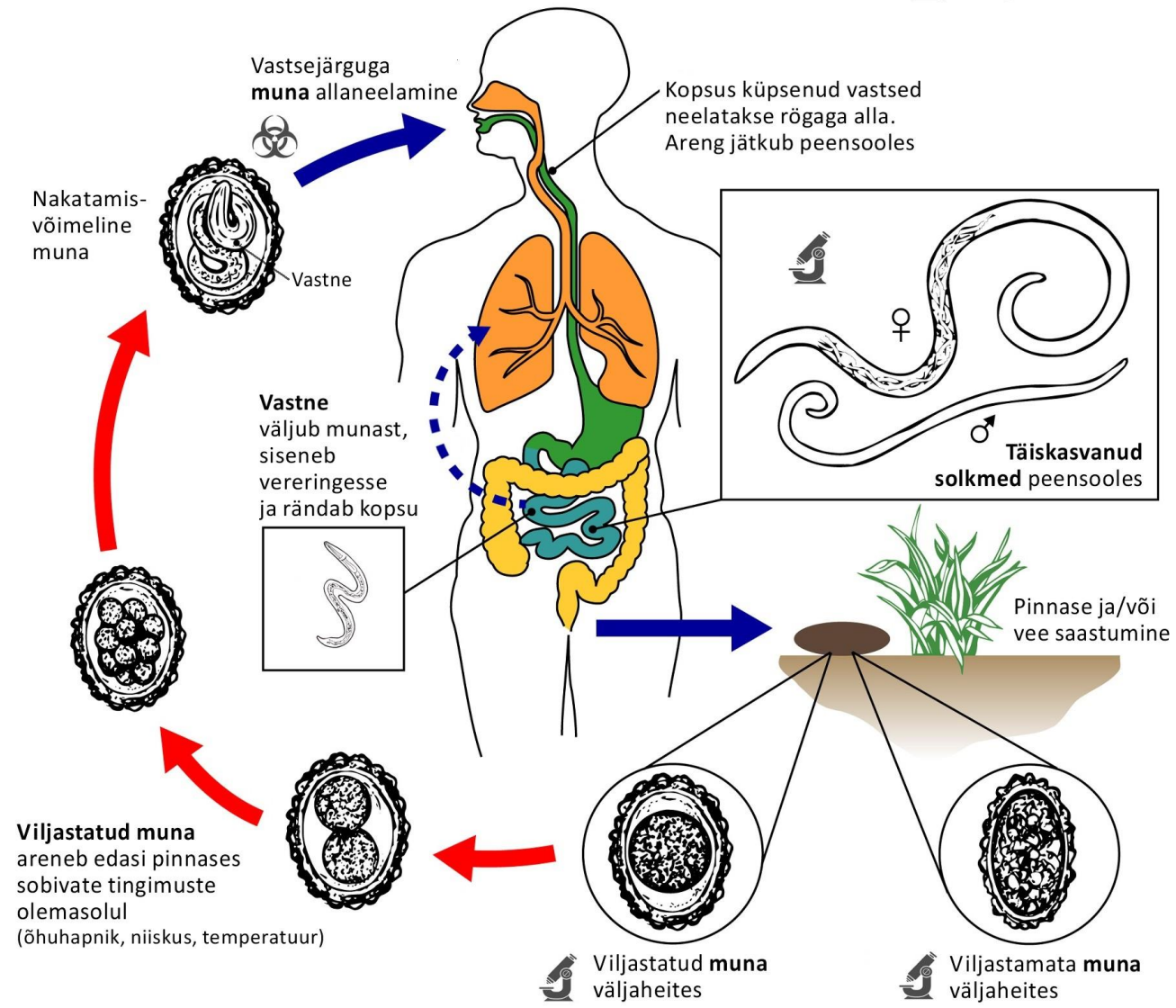
Echinococcus multilocularis

 **Nakkav staadium**
 **Diagnostiline staadium**

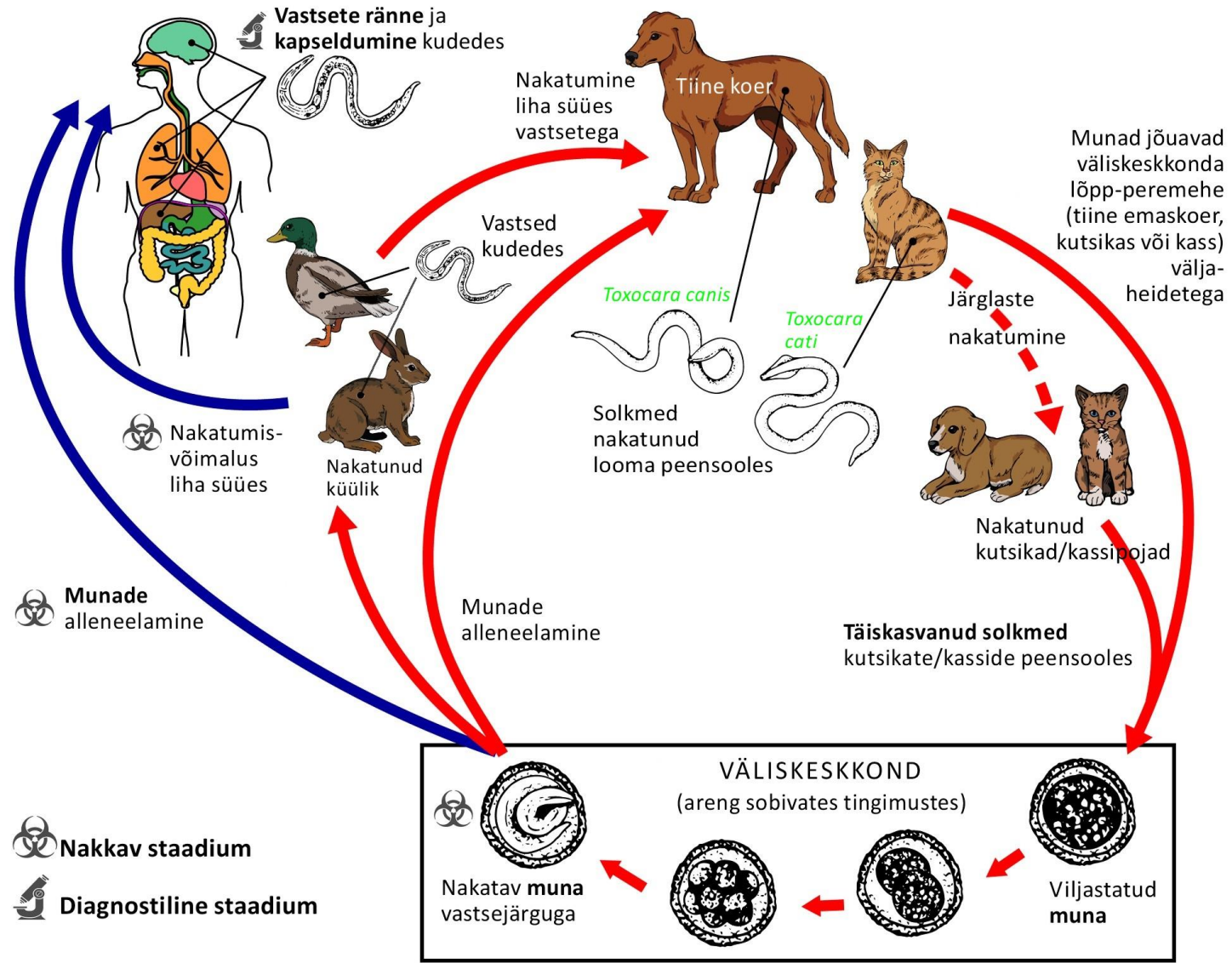


Ascaris lumbricoides

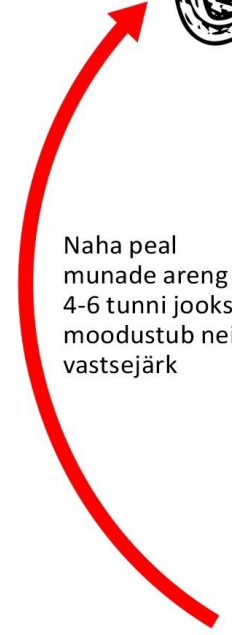
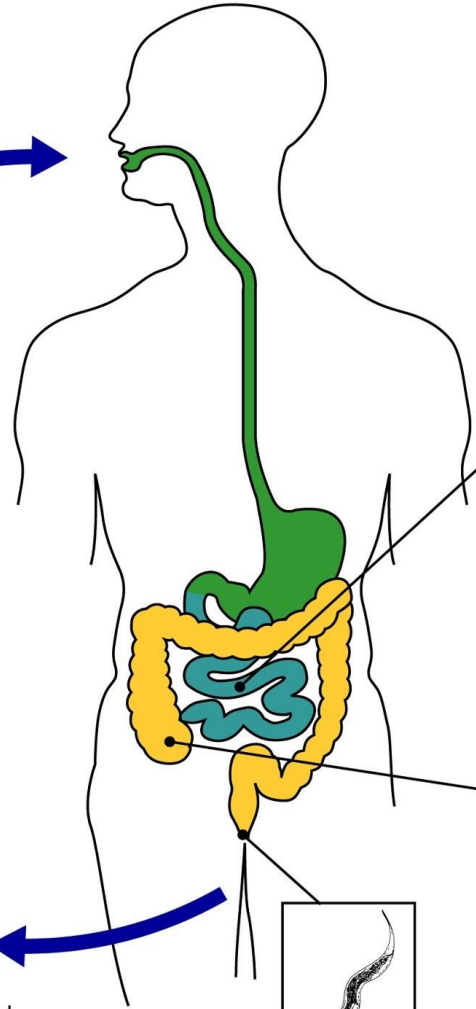
 **Nakkav staadium**
 **Diagnostiline staadium**



Toxocara ssp.



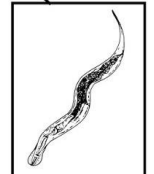
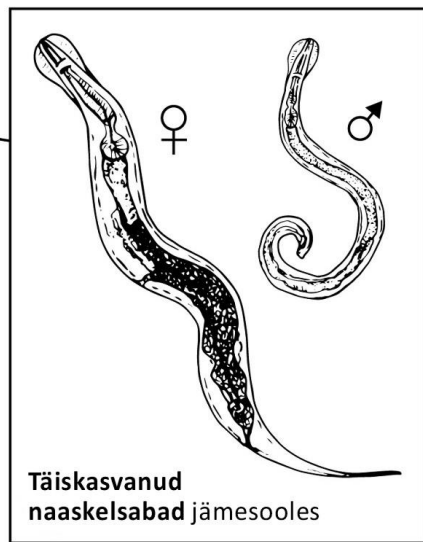
Enterobius vermicularis



Naha peal munade areng jätkub. 4-6 tunni jooksul moodustub neisse vastsejärk



Munad perianaalpiirkonna nahal



Emased ussid liiguvad öösiti perianaalpiirkonda, kus nad munevad





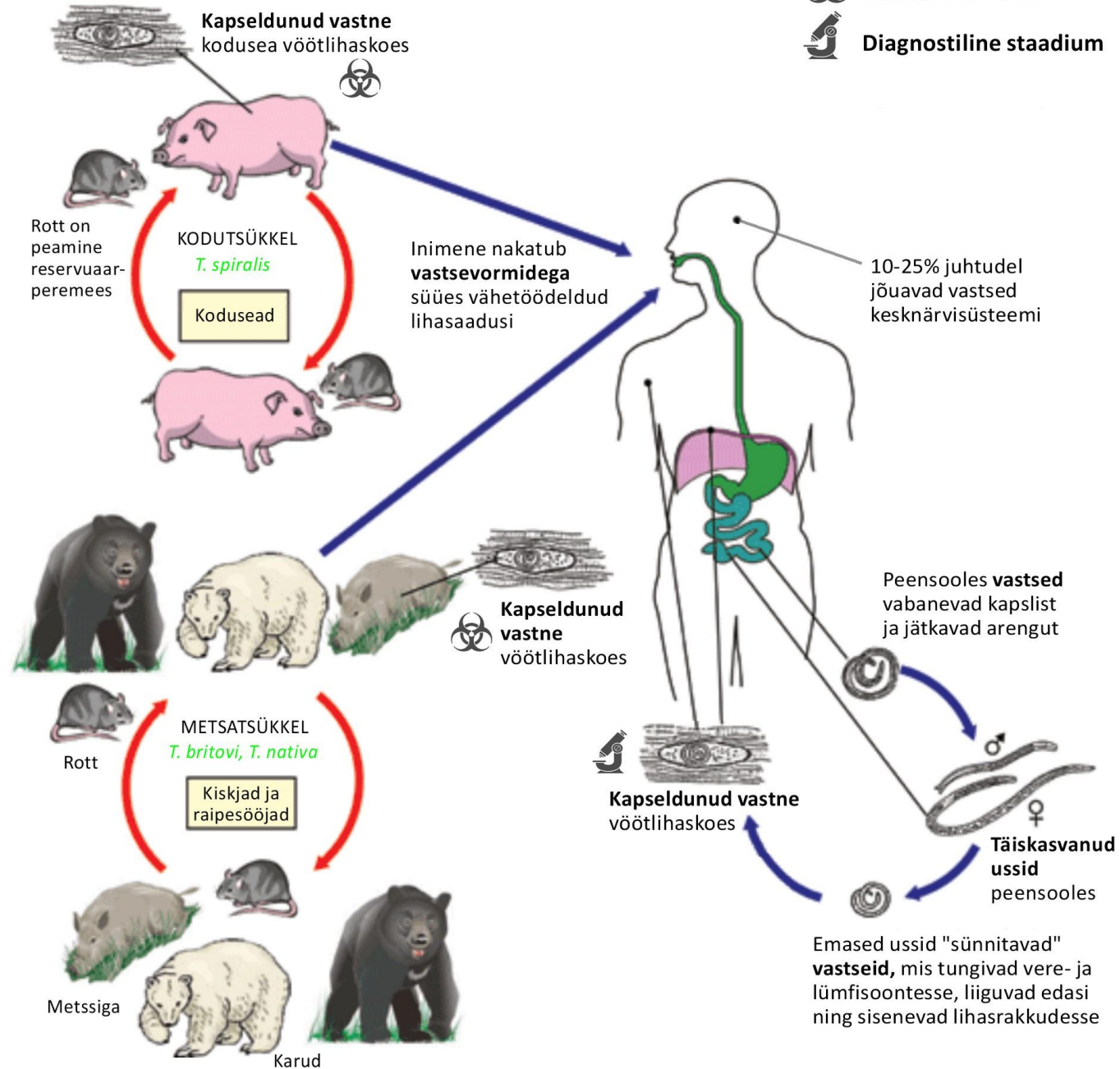
Nakkav staadium



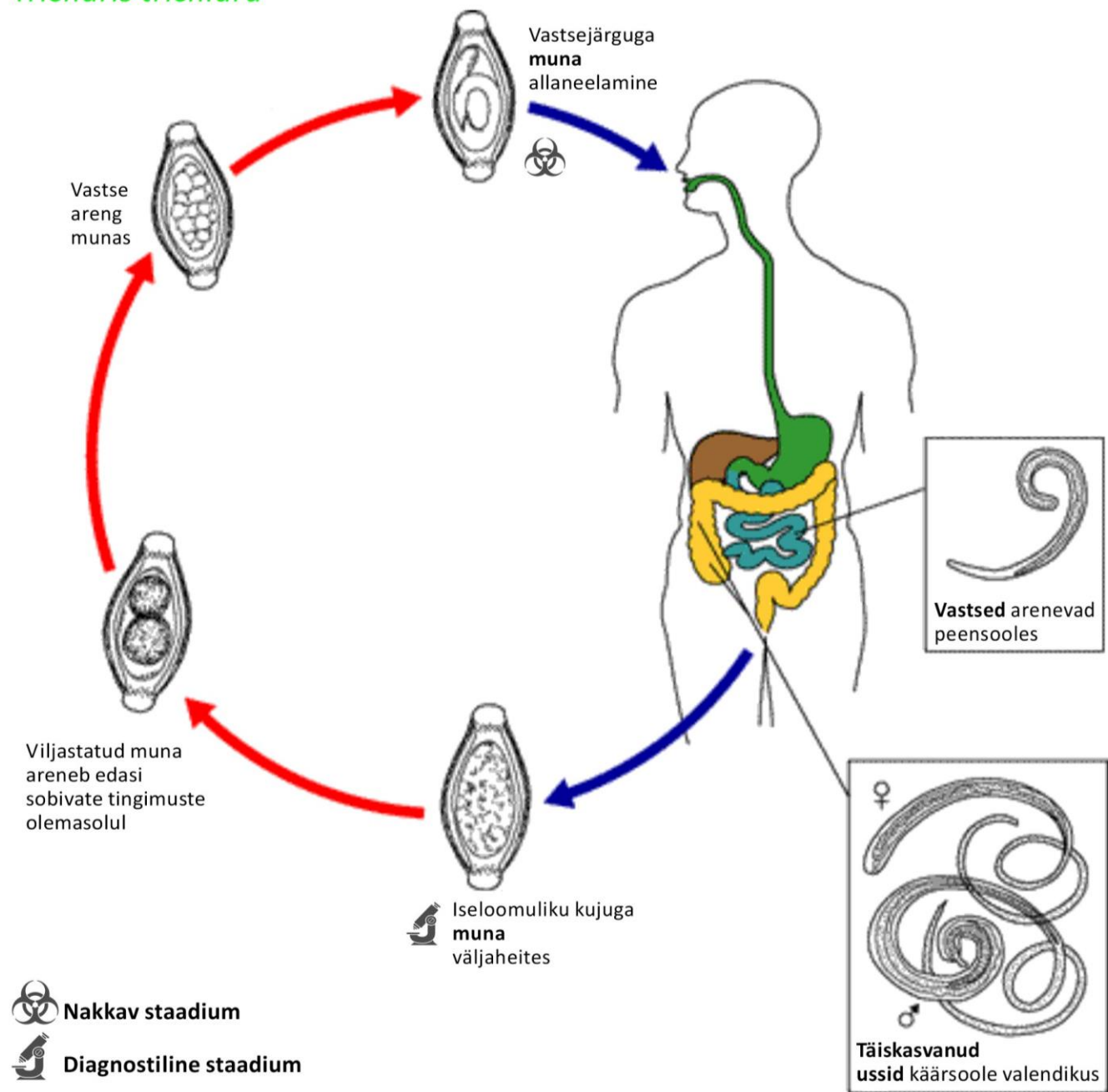
Diagnostiline staadium

Trichinella ssp.

 **Nakkav staadium**
 **Diagnostiline staadium**



Trichuris trichiura



Ancylostoma duodenale
Necator americanus

